

*Beetham Church*  
**Harvest**  
**Even song**

**Sunday 7th October**  
**at 6.00pm**

A special service of Words and Music  
 to celebrate the nostalgia of the  
 Harvest Festival tradition

*All are welcome*

Friends of Beetham Church

**OTTO VOCE**

sing for an Autumn Evening

**Saturday October 13th**  
**at 7pm**  
**in Beetham Church**

*Founded in 2007, OttoVoce is an award winning ladies' choir based in South Lakeland. Led by Tracie Penwarden, they sing to raise money for charity. Proceeds from this event will go to Beetham Church*

**Tickets £10, including wine**

Available from John on 015395 62648,  
 Jenny on 015395 62559, or online at  
[beethamstmichaelandallangels.co.uk](http://beethamstmichaelandallangels.co.uk)

**FREE ENTRY**

13th - 14th October

**Apple**  
 & FRUIT WEEKEND

CELEBRATE THE NATION'S  
 FAVOURITE FRUITS

**MEET THE OWLS**

**Special Fruity Menu**  
 in the cafe & food tasting in  
 the Food Shop

**10% OFF**  
**ALL FRUIT TREES**  
 FOR THE WEEKEND!

**LIVE MUSIC**

**JUICE YOUR OWN APPLES**

**THE LONGEST**  
 Peel Competition  
 can you beat 35ft?

**BONGO BALLOONS**  
 (SATURDAY ONLY, 2 - 4PM)

**APPLE EXPERT**  
 ANDY GILCHRIST WILL BE HERE TO ANSWER  
 YOUR APPLE RELATED QUERIES (SATURDAY ONLY)

**APPLE & FRUIT**  
**TASTING**

**ENTER THE**  
**GREAT BEETHAM**  
 Apple Pie Competition

**Open 7 days a week**  
 9.00-5.00, Sunday 10.30-4.30  
 We're on the A6  
 one mile south of milnthorpe

**Beetham**  
 NURSERIES

015395 63630 :: [www.beethamnurseries.co.uk](http://www.beethamnurseries.co.uk)

**Organ**  
**Recital**  
 by  
**Geoff Field**

**Sunday 14th October**  
**at 2pm**  
**in Beetham Church**

*Donations in aid of*  
*Beetham Church Heritage Trust*



**THE GATEWAY**

PARISH MAGAZINE OF  
**ST MICHAEL AND ALL ANGELS, BEETHAM**

**OCTOBER 2018**

*'Season of mists and mellow fruitfulness, Close bosom-friend of the maturing sun,'*  
 wrote John Keats in the opening lines of his poem, 'To Autumn'

The last time I composed an article for the front page of the Gateway I confidently predicted that by the time the September Gateway was produced we would know the name of the person who was to be our new 'Priest in the Parsonage'. Well, I was wrong. It's now October and we don't know and there is no immediate prospect of the situation changing. The initial advertising process failed to attract any interested candidates and so we are having to repeat the operation. A new advert, produced this time in-house, will be on the market very soon and we anticipate and hope for a better response. Meanwhile, we carry on carrying on and the regular cycle of events repeats itself. Harvest Festival is upon us: next weekend sees our Harvest Supper and our Harvest Festival in church. We shall again be collecting Harvest Gifts to support the work of Manna House in Kendal. We are appealing to all members of the community to help provide practical help to the homeless by contributing small gifts of toiletries, socks, underwear, tinned soups, tea, coffee - in short, anything that would help a homeless person to survive the coming months. All contributions can be left in church at any time over the next couple of weeks and we will make sure that everything donated is taken to Manna House as soon as possible.

But what about Keats' description of autumn? Well, the fruitfulness part has been amply demonstrated this year, despite the extreme weather patterns experienced through the late spring and summer. There are more apples and damsons about than can be pickled, stewed, turned into jam or wine, or otherwise disposed of. Boxes of apples appear in all sorts of places overnight with the legend 'Help yourself' prominently displayed. From many a kitchen emanates the beguiling odour of spices as the summer's fruit is turned into the winter's relish.

'Season of mists' - again, sharply contrasting day/night temperatures have produced plenty of that and the sun, often more appreciated at this time because of the overall cooler weather, has indeed matured from its summer extremes to a balmier and more easily tolerated source of warmth.

Some do not look forward to autumn. The cooler days (and even cooler nights!) are regretted as memories of long, hot, summer days recede. The earlier sunset and later sunrise combine to produce a feeling of melancholy as the days shorten. Keats captures this feeling but he also celebrates the compensating joys of the season as he describes how "full-grown lambs loud bleat from hilly bourn" and "the redbreast whistles from a garden-croft".

I like autumn. After a busy summer and somewhat frantic transition through September, October offers a welcome promise of a more gentle time to come. I enjoy seeing lights twinkling in the evening as the light fades; I enjoy the sharp freshness of the early morning chill. In short, I like the contrast with the season we are leaving behind. And there is still plenty going on in church and in the community to keep us busy. This year, to mark the 100th anniversary of the signing of the Armistice that brought to an end the devastation of the Great War, special events are being planned, the first signs of which are already visible in the village and the wider area.

Elsewhere in this edition of Gateway you will find information about the many and varied activities that are planned for the coming months - coffee mornings, concerts, talks, commemoration - in addition to the regular cycle of church life. All of these activities take a lot of time and effort to organise and implement. We are fortunate to live in a community where people are prepared to give so freely of their time and their talents so that all may benefit.

"Where are the songs of Spring?" asks the poet. Well, spring is still a long way off, so let us appreciate and enjoy the benefits of autumn - as Keats puts it: "thou hast thy music too".

**Brian Smalley**

[www.beethamstmichaelandallangels.co.uk](http://www.beethamstmichaelandallangels.co.uk)





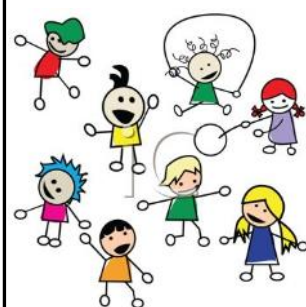
## STORTH MOTHER & TODDLER GROUP

Heron Hall, Storth

Tuesdays and Thursdays, 10am - 12noon

All welcome

Enquiries to Tina on 015395 - 62281



## Beetham CE School Toddler Group

Every Friday, 2pm-3.15pm  
in the school

Play, Dance and Fun!

All Babies & Toddlers Welcome

## C.E.S.

Electrical Services

Installation ~ Inspection  
~ Testing

015395 63303  
07903 161602

Friendly reliable service



## MARK ECCLES

ME Electrical Contractors

All aspects of electrical work undertaken

**07866 510 079**

**Graham Pooley  
WINDOW CLEANER**

1 Castle Riggs, Kendal  
**01539 - 721981**

## NEIL TAYLOR

Painter, Decorator  
& Paperhanger

Tel: 015395 - 64411  
Mobile: 07778 - 467521

## ANDREW COWPERTHWAIT

**PAINTER DECORATOR  
PLUMBER & TILER**  
**01524 - 762443**

## MARTIN

**PAINTER & DECORATOR**  
**07881 895909**  
**01524 61834**  
martin.painting.decorating@gmail.com

## T.T. CARPETS

RED BARN  
HARMONY HILL  
MILNTHORPE  
**015395 - 62898**

## BOOKS BOUGHT

Collectable and contemporary  
books bought.  
Single items or whole collections.  
Will travel to view (from Allithwaite)  
☎ 015395 35125 P.B.F.A.member

**Lakeland & Lunesdale  
Physiotherapy &  
Sports Injury Clinic**  
Milnthorpe

**015395 64727**

clinic@physio-sportsinjuries.co.uk  
www.physio-sportsinjuries.co.uk

## LUNESDALE HOUSE

RESIDENTIAL  
RETIREMENT HOME

Hale, nr Milnthorpe

**015395 - 63293**

Registered with The National Care  
Standards Commission

## BM Welding & Fabrication

Gates Railings & Balustrades  
Stainless Aluminium Glass  
Agricultural Work  
On site Welding



**07971 080823**



benmerckel13@gmail.com

## C. M. SIGNS

Your local time-served  
sign-writing specialists  
**015395 - 63000**

## L. M. Baverstock

Ophthalmic Opticians

The Square, Milnthorpe  
**015395 - 62633**



Flowers for all occasions

**Woodlands Nurseries**

**Crooklands**  
**01539 567273**

Gas & Oil Boiler,  
Gas Fire Repairs & Maintenance



**015395 - 63562**  
**MARK N. SHAW**



**Chaplows Heating Services**  
Boiler Services  
**GAS OIL LPG**  
**015395 - 63017**  
**07831 - 223140**

## FOOTCARE AT HOME

**Tracey Garrett BSc MinstChp**  
Nail trimming ~ Ingrown nails  
Corns ~ Callus ~ Diabetic foot  
Care and advice  
**For Home Visit tel 07766 167018**

## Drop-in Memory Clinic

For memory assessment advice  
**Monday 2-4pm**  
at Park View Surgery, Milnthorpe  
Tel: 01539 715555

## CREATIVE SEAFOODS

Lovely fresh and smoked fish  
& shellfish delivered to your  
door weekly.

*Ethically sound & nicely packaged.  
Ready for eating now or freezing.*

for details, contact

**NATHAN LUSTED**  
**0750196 7000**

info@creativeseafoods.co.uk

## BED AND BREAKFAST

Barn Close, Beetham

Peaceful setting on edge of village  
www.barnclose-beetham.co.uk  
www.nwbirds.co.uk

Anne Robinson 015395 63191

## Irene Taylor Hearing

- Specialist hearing aid advice  
- Earwax removal by microsuction  
- iPhone compatible hearing aids  
- Invisible hearing aids  
- Hearing protection for shooting,  
motorcyclists & musicians  
- TV & telephone accessories  
- Home visits  
Salt Pie Lane, Kirkby Lonsdale, LA6 2BH  
**015242 73589**  
Est. 1980 ~ Registered with hcpc  
www.irenetaylorhearing.co.uk

## TONY GIBSON

SPECIALIST IN:

- STONEMASONRY -  
- PLASTERING -  
- ALL ASPECTS  
OF BUILDING -

**015395 64702**  
**07815 888 564**

www.tgibsonbuilderscumbria.co.uk

## SUPPORT OUR LOCAL ADVERTISERS

To book space from £30  
per year call John on  
015395 62648 or email  
gatewayads@btinternet.com

Visit our website at  
beethamstmichaelandallangels.co.uk  
for deadlines and more details

## THE PARISH OF ST. MICHAEL AND ALL ANGELS, BEETHAM

Priest-in Charge

Lay Chair/Churchwarden

Churchwarden

Churchwarden

PCC Secretary

PCC Treasurer

Church Flowers

Bell Tower Captain

Beetham C of E School

"The Gateway" - Editor

- Business Manager

Vacancy

Brian Smalley

Jenny Marks

Ian Stirrup

Dorothy MacLeod

John Lomax

Dianne Lomax

Jenny Marks

Wendy Nicholas

Jenny Marks

John Lomax

015395 64778

015395 62559

015395 64320

015395 62062

015395 62648

015395 62648

015395 62559

015395 62515

015395 62559

015395 62648

b.e.smalley@btinternet.com

jenny.marks@btinternet.com

ianstirrup02@gmail.com

admdhm@live.co.uk

j.d.lomax@btinternet.com

diannelomax@btinternet.com

jenny.marks@btinternet.com

head@beetham.cumbria.sch.uk

beethamnews@aol.com

gatewayads@btinternet.com

## Church Services at Beetham in October

Date	Time	Service
Wed 3rd Oct	10am	Public Worship with Communion by Extension
Thurs 4th Oct	9.15am	School Harvest Assembly
Sun 7th Oct Harvest Festival	10am	Harvest Parish Eucharist
	6pm	Harvest Songs of Praise
Fri 12th Oct	9am	School Assembly
	10am	Parish Communion & Baptism
Sun 14th Oct Friends Sunday	11.30am	Friends AGM
	-	No Evensong Service
Fri 19th Oct	9am	School Assembly
Sun 21st Oct 21st after Trinity	10am	Parish Communion
	6pm	Evensong
Sun 28th Oct 22nd after Trinity	10am	Parish Communion
	6pm	Evensong
Fri 2nd Nov	9am	School Assembly
Sun 4th Nov 23rd after Trinity	10am	Parish Communion
	6pm	Evensong

Please check Church noticeboards or  
beethamstmichaelandallangels.co.uk for any changes

## Friends Sunday

Sunday 14th October

Friends' AGM, 11.30am



We are delighted that the Reverend Geoff Turner will be the celebrant and preacher at our special Friends Sunday Parish Communion this year. The Friends of Beetham Church Annual General Meeting will follow in church at 11.30am.

Friends are then welcome to join committee members for lunch in The Wheatsheaf from noon (booking strongly recommended). After lunch, everyone is invited to return to the church for an organ recital by our organist Geoff Field at 2pm. This event is open to all (not just Friends members!) - there is no charge; donations are to the Beetham Church Heritage Trust

## Baptism

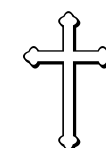
Rosie Cathleen Moore,  
daughter for Stephen & Gemma,  
was baptised on Sunday 9th September

We welcome her into Beetham Church



## Service of Thanksgiving

Our prayers and condolences are  
with the family of  
Eleanor Janet Margaret Cutress  
Saturday 22nd September



## Beetham CE School Foundation Governors

Our church enjoys strong daily links with Beetham CE School and is keen to maintain our full complement of Foundation Governors. John Lomax has agreed to remain as the Chair of the Governors, and Brian Smalley, Vivien Stirrup, Jenny Marks, Sarah Easton, Dennis Wright and Rachel Wray are all continuing as Foundation Governors for another year, with responsibility for preserving and developing the religious character of the school

Jenny Beresford-Jones stood down this summer and we would like extend our grateful thanks to Jenny for all her work as a Governor over so many years. In her place we are delighted to welcome Tess Rowlands as a new Foundation Governor, who brings a wealth of experience from previous school governing bodies



Thanks also go to the many other active church members who volunteer with reading, after-school clubs, assembly, and special events, helping our schoolchildren to develop in such a safe and happy environment

## House for Duty Priest Vacancy

As reported in Brian's Front Page Letter, we are re-advertising for a new priest for Beetham Church this month. The closing date for applications is 29th October, with interviews planned for 15th November.

If you know of anyone who may be interested, the details of the post and our Parish Profile can be found on our website at

**www.beethamstmichaelandallangels.co.uk**

Please help us to spread the word

Friends of Beetham Church



The Friends of Beetham Church organise events throughout the year to raise funds for the upkeep of the church and to maintain the strong sense of community that exists in and around St Michael & All Angels.

Friends Membership is by Annual subscription of £10, a one-off payment of £100 for Life membership, or £150 for joint Life members.

If you would like to play a part in maintaining our beautiful church for future generations please pick up a leaflet at the back of church, download the forms from the Heritage Trust page at beethamstmichaelandallangels.co.uk or email beethamnews@aol.com for a Membership pack.





"Autumn .... the years last, loveliest smile"  
John Howard Bryant

Indeed it is and seems to have come upon us in a minim. But we the happy Beetham Band continue to smile and laugh all the way to spring and beyond.

Why, you may ask, is playing an instrument not difficult and stressful? Well one cannot deny it has its moments that prove puzzling, but our unique approach to music renders stress obsolete, replacing it with laughter.

After all, we have reached a milestone recently ~ we are ONE YEAR OLD! I think we are doing something right. Well done everyone.

We look forward to playing during the WW1 commemorative weekend, plus solo players at church services, and of course Christmas. Should you like a band to add their unique sparkle to your Christmas event, please ask. If we can we will.

Enjoy this early Autumn and all it brings. If it presents you with some spare time, we welcome new members of any standard, beginners included. It really is the best thing to do on a Saturday morning.

For more information contact Tess on 015395 63254



Our 1st birthday cake did not last very long!

## Christmas Music

It may still seem rather early to many people to be talking about Christmas, but every year there is a great deal of planning and preparation in the weeks leading up to the busy period of Advent in December. Part of these preparations include the different musical aspects of the church, and the Beetham Church Handbellringers are already starting to practice carols, for the first of their many performances during November and December.



The church is rightly proud of its musical tradition and is often heard at its best singing carols and anthems at Christmas. The choir is looking for new members (particularly men!) to rehearse for a temporarily enlarged choir for the **Service of Nine Lessons and Carols** at 6.30pm on Sunday 23rd December. Alternatively why not join in the fun of **Carol Singing** around Beetham village in the week before Christmas, or bring the family along to the **Christingle Service** on Christmas Eve

All events are open to everyone, and you will be assured of a warm and enjoyable welcome

## Church Christmas Cards

There are two new designs of Christmas cards available this year, depicting 'Beetham Church in Snow' and 'Winter in Beetham'. The cards will be in packs of four (two of each design) and will be on sale in the church from mid-October



## Beetham Village Coffee Morning

Wednesday  
3rd October  
10.30 to 11.45am  
in Church

Pop in for delicious  
homemade cakes,  
coffee and chat.  
There is no charge  
& all are welcome



## Harvest Festival 10am, Sunday 7th October

Beetham Church and Beetham CE School will again be supporting Manna House Kendal with Harvest gifts. Tins of soup/vegetables/meat/fruit, coffee & tea, bedding, toiletries & clothes would all be gratefully received in church during Harvest Week, or at the Harvest Services on 7th October

Manna House works for the public in South Lakeland, providing advice, advocacy and a drop-in support centre for those who are homeless, vulnerably housed, lonely or needing help



## 'Silent Soldiers' - Lest We Forget

The Royal British Legion is inviting all communities to take part in a display of silhouettes across the country, as a 'Thank You' to the First World War generation who served, sacrificed, rebuilt and changed the nation.

Beetham Parish Council has sponsored this life-size black silhouette of a 'Tommy' which has been installed near the Beetham Cenotaph. Details of an Armistice exhibition in church supported by the Imperial War Museum, special Remembrance Day services, and local contributions to the national commemorations will be in the November Gateway

## Regal Russia

7pm, Friday 16th November

John Falkingham

presents his illustrated travelogue of Russia  
at The Heron Theatre

Tickets £8, including wine & nibbles

from John Lomax on 015395 62648 or online at  
[www.beethamstmichaelandallangels.co.uk](http://www.beethamstmichaelandallangels.co.uk)

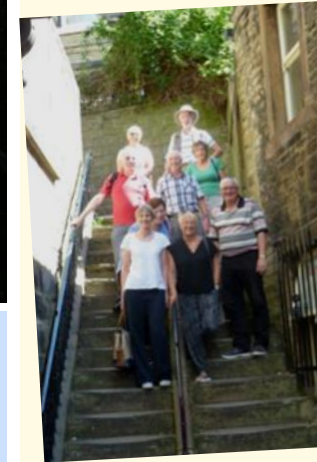


## Beetham Bellringers World Tour

Lancashire 2016, Cumbria 2017, and this year across the border to Yorkshire for the next stage of the Beetham Towerbell Ringers Grand Tour. The sun was shining and first stop was Christ Church at New Mill for the 10 intrepid ringers and supporters. An enjoyable ring on their six bells and look around the church, and then on to the 8-bell tower of Holy Trinity in Holmfirth

This was followed by the main event of the day - pub lunch! Then the final tower was St Pauls in Armitage Bridge. Three very different towers to ring with lots of steps to climb, and certainly made us appreciate our ground

floor ring at Beetham. A big thank you to Sarah Easton for organising the day, and we look forward to the next leg of our world tour...



## REMEMBRANCE, REFLECTION, RECONCILIATION



An evening of words and music to  
commemorate 100 years since the Armistice

6pm at St. Michael and All Angels, Beetham  
on Sunday 11th of November





Welcome back to our new school year! We are delighted to welcome 7 children into our Reception Class and 3 new members of staff - Mrs Sansom, KS2 teacher, Mrs McCormick, Early Years Teaching Assistant and Mrs Rodgers, School Administrator.

Many of you will have noticed our fabulous new classroom for Yr 1 & 2 in the garden - Beetham Lodge. This was installed during the holiday and is proving to be a super teaching space but also an additional room for group work and meetings. Following the installation we had a working party to tidy and clear the school grounds. A fantastic group of governors and friends worked for the equivalent of 60 hours and visited the tip too many times to mention! We are really grateful for their help and hard work in making our back garden so tidy and ready for the start of term. We are now looking forward to Tim Farron MP visiting for an official opening before our half term holiday.

As well as a new classroom for Yr 1 & 2 our Reception and Nursery class have also moved and now have a lovely big room where they are enjoying accessing lots of different activities as well as time for outdoor learning. We also used the School Library Service during the holiday to help us give the library a makeover and this is now an inviting place to visit, borrow books and share stories.

During our second week we visited the County Show. This was great fun as always and full of exciting and interesting learning opportunities. We enjoyed looking at all the animals and trying different skills such as stonemasonry and playing the harp! A special well done to Betsy, one of our Reception children who competed on her horse Seb, watched enthusiastically by our children as she won 2 classes, for which she received beautiful rosettes.

Our Christian Value this half term is RESPECT and we had a super morning working together in family groups looking at different aspects of this important value: Respect for God's Creation, Respect for others, Respect for our minds and bodies, and how we show respect. We now have a display in our entrance of all the work produced showing our different ideas and thoughts about Respect.

Next week we celebrate Harvest with a service in church on Thursday morning at 9.15am. We are once again supporting Manna House and collecting gifts that are useful for the people who they support within our community.

As I write we are making our final preparations for our first outdoor activity day this term - Archery and Multisports for Early Years and KS1 and a Canoe Day on Windermere for KS2. Full reports next month.

Please join us for our Harvest Service - everyone welcome

Best wishes  
Wendy Nicholas





## Beetham & Beyond



October Programme **the HERON theatre** art dance music film

Friday 5th October **FILM AT THE HERON** 7.30pm  
**A Fantastic Woman** (2017) [15] - 1 hour 44 mins

Orlando, a well-off gentleman, meets Marina, a hopeful singer in a nightclub who becomes the love of his life. He falls ill and in the wake of his death Marina realises that everything is brought into question.

Sunday 7th October Matinée 2.30pm  
**Robin Hill** Classical Guitar

Robin's outstanding guitar-playing skills take him all over the world. As well as solo items, he will perform with pre-recorded tracks that he has prepared with orchestra, band and for duo guitars

Friday 12th October 7.30pm  
**The Giant Killers Play** Long Lane Theatre Company

A bunch of Lancashire mill workers defy all odds by becoming the first working-class team to play in the FA Cup, and winning respect by proving that passion and spirit is more than wealth and privilege

Saturday 20th October 7.30pm  
**The Songs of Nick Drake** Keith James

Nick Drake recorded 3 albums between 1969 & 1972, but tragically died in 1974. Singer/guitarist Keith James revived his songs in 2001 and has since performed over 1500 shows

Friday 26th October 7.30pm  
**The Pendle Witch** Slade Wolfe Enterprises

It is 1636 & a solitary woman has been imprisoned in Lancaster Castle from a witchcraft trial 24 years earlier. She was not the accused but, aged just 9, a prosecution witness against the Pendle Witches...

Friday 2nd November **FILM AT THE HERON** 7.30pm  
**The Death of Stalin** (2017) [15] - 1 hour 47 mins

A biting funny takedown of bureaucratic dysfunction!

Select your seats and book online at [www.theherontheatre.com](http://www.theherontheatre.com)  
Box Office open Fridays from 10am until 12noon 015395 64283



Local family private hire  
company founded in 1979

All drivers, male and female, have  
level 2 nvq in road vehicle  
passenger driving and are fully  
licensed with SLDC.

We pride ourselves in having a  
friendly and reliable service

For a quote please contact us on  
015395 62917 or  
07974 108501



## Congratulations to Beetham WI



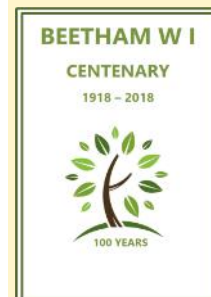
A very big "Well Done" and thank you to all of the members of Beetham WI who submitted entries for the County Show.... ranging from willow weaving to jacket tailoring, tarts to tapestry, photography to floristry, plus all of the "usual" knitting and sewing, and making cakes, jams, scones, cordials etc etc. It all involves much hard work and organisation, however the magnificent result is that Beetham retained the Golden Jubilee Plaque, for the WI gaining the highest average points total, and Wendy Higson retained the Gladstone Trophy, for the individual with the highest score.



Beetham WI also entered over 100 poppies for the County Show World War I display, which reportedly looked amazing, however I could not find that tent!!

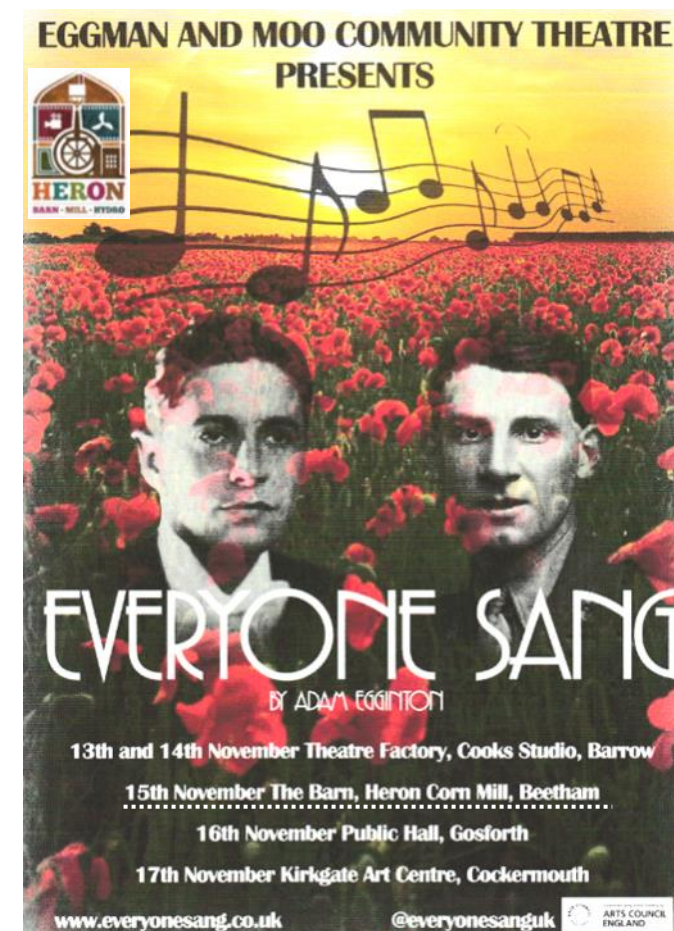
This completes another two of our 100 challenges....although we have a few more to achieve yet.

Please don't forget Tuesday 9th October 7pm in The Heron Theatre, for a workshop and performance by "Pandora's Handbag", a local acapella group, who always ensure a fun evening. Tickets for this are £7.50 on the door, to include a glass of wine.



See you there  
Sarah Easton  
WI President

## What's On Guide



**Friday 23rd November**  
at 7.30pm  
Borwick and Priest  
Hutton Memorial Hall  
**'A Flourish of Folk Songs'**

including  
Vaughan Williams: In Windsor Forest  
Rutter: The Sprig of Thyme  
Matyas Seiber: 3 Hungarian Folk Songs

Tickets from Choir members (children & students free)  
01539 621559 ~ [www.eversleychoir.org](http://www.eversleychoir.org)

## QUEST

A friendly group, we meet to hear talks,  
often with slides, 2nd & 4th Thursdays,  
in

**The Athenaeum, Leasgill at 10am**  
All are welcome!

**11th October : Stuart Newton**  
**'The Heron Theatre - past & present'**

**25th October : Colin James**  
**'Metagrobologist - an opportunity to**  
**play with puzzles you hold in your hand'**

Contact Patricia McPoland 015395 62765  
[McPoland@btinternet.com](mailto:McPoland@btinternet.com)

## Heron Corn Mill



**Rustic Afternoon Tea**  
**Friday 12th October 3pm**

Rustic Tea event to raise money for the Xmas party for older local residents, with scones, sandwiches and cakes made from our Mill flour. Tickets £12.50 from [info@heronmill.org](mailto:info@heronmill.org), 015395 64271, or at the barn

**Mill Tour and Milling Demonstration**  
**Friday 5th October 11.30am-1pm**

Learn about the historic Heron Corn Mill and watch as Stuart mills our artisan flours, which are available for purchase. Free drink with every adult ticket. Adults £5, under 16s free

**We Do Not Idly Waste Our Time**  
**Sat/Sun 27th & 28th October 11am-4pm**

2 day retrospective of films, displays and speakers looking at projects at the Mill since 2004. See website for details



Heron Corn Mill, Mill Lane, Beetham ~ [www.heronmill.org](http://www.heronmill.org), 015395 64271

## Westmorland Orchestra

Saturday 1st December at 7.30pm at Lakes Leisure Kendal

Beethoven ~ Pastoral Symphony  
Butterworth ~ A Shropshire Lad  
Vaughan Williams ~ Songs of Travel  
Moeran ~ Wythorne's Shadow  
Arthur Benjamin ~ Jamaican Rumba

Details at [www.westmorlandorchestra.org.uk](http://www.westmorlandorchestra.org.uk)

## Beetham CE School 200 Club Results



	Draw 231	Draw 232
1st	Stokes	Jackson
2nd	Beresford-Jones	Nicholas
3rd	Shaw	Heyes

Congratulations to them all!

Fancy a flutter? Join our club for only £4 a month with the chance to win £70, £25 or £10 every month. The form to join the lottery is now available on the school website.

All welcome ~ be in it to win it!

## Arnside Highlights present "Brilliance"

Sunday 18th November at 7.30pm  
Arnside Educational Institute, Church Hill, Arnside

Arnside Highlights are thrilled to welcome back Farnham Maltings with their new play "Brilliance". Suitable for ages 10+, Brilliance is a 90-minute theatrical event that celebrates progress and change in a bright new world, from the company that brought us "The Polish Play" and "Brave Folk" (and never fail to deliver - we KNOW this will be 'brilliant'!)

Tickets: Sue Hayward 01524 762254, [suediane57@gmail.com](mailto:suediane57@gmail.com)  
or online <https://www.ticketsource.co.uk/boxoffice/select/bMQXeDHzDNbV> (booking fee applies to online bookings)

Ticket prices are £8 for adults and £4 for children





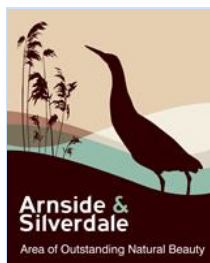
The Church of England  
around the Kent Estuary

### A 'Walk about Nativity' for December, followed by an Alpha Course Actors and volunteers needed!

We're hoping to do a 'Walk about Nativity' in Milnthorpe in December and are looking for actors, singers and anyone interested in doing sets/props, music and other things such as catering, parking and crowd control for this event. It will have a missional finale as there will be an invitation to an Alpha Course at the end so people can explore the message of the Christmas story more. For that we are also looking for volunteers to help run the Alpha course from January.

- The first meeting for the Nativity will be on Thursday 18th October, 7:00pm, at M:Hub
- A meeting for volunteers to run an Alpha course will be held on Thursday 18th October at 5.30pm, at M:Hub

Contact Penny (pioneer for the Methodist circuit)  
on pennysevern@googlemail.com to find out more



### Arnside & Silverdale Area of Outstanding Natural Beauty launches Management Plan review

Arnside & Silverdale Area of Outstanding Natural Beauty Partnership produces a Management Plan every five years to determine its work priorities.

The draft plan for 2019-24 will be available on the AONB website, in the AONB office on Arnside station and in local libraries from early October for public consultation. More details will be available on the AONB website at [www.arnsidesilverdaleaonb.org.uk](http://www.arnsidesilverdaleaonb.org.uk)

### Beetham Flood Forum Flood Investigation Report Wednesday 24th October

6.30pm-8pm

The Heron Theatre  
(doors open 6.15pm)



Presentation of the draft Section 19 Flood Investigation Report and discussion on the next steps going forward to reduce the risk of flooding in Beetham. All welcome

[www.southlakeland@cumbria.gov.uk](mailto:www.southlakeland@cumbria.gov.uk)

### Beetham Parish Council

The next meeting will be on  
**Monday 1st October**  
at 7pm  
in Beetham CE School

Members of the public are welcome to attend Minutes of previous meetings and details of the current East and West Ward Councillors can be found on the website at [www.beethampc.co.uk](http://www.beethampc.co.uk)

### 'Water Power from the Lakeland Fells'

An illustrated talk by Andrew Lowe

Wednesday 24th October, 7.30pm  
at the Abbott Hall Social Centre, Kendal

All proceeds in aid of  
The Children's Society

The Children's  
Society

No child  
should feel  
alone

Admission £4  
including refreshments

Pay on the door, or tickets available  
from Paul Gardner 01539 737054

### Gossiping the Gospel 16th October 7.30pm at the Methodist Hub Milnthorpe

An enthusiastic and interesting gathering of Christians of many denominations led by the retired Bishop of Lancaster and his wife, to inspire the movement towards a Kent Estuary Mission Community. Please come along and bring a friend.

### Sunday Worship in the Kent Estuary area

#### ARNSIDE ST JAMES

8.00am: BCP Holy Communion  
10.30am: Morning Worship, usually with Communion  
2nd Sunday: All-age Worship  
4.30pm: 2nd Sunday Celtic Communion  
Info: [arnsidechurch.webplus.net](http://arnsidechurch.webplus.net) Revd David Cooper 01524 761319

#### BEETHAM ST MICHAEL AND ALL ANGELS

10.00am: Parish Communion  
6.00pm: Sung Evensong (5th Sunday: said BCP Evening Service)  
Info: [beethamstmichaelandallangels.co.uk](http://beethamstmichaelandallangels.co.uk)

#### HEVERSHAM ST PETER

8.00am: BCP Holy Communion  
2nd, 4th and 5th Sundays  
9.30am: Main Service:  
1st and 3rd Sundays: Parish Communion (CW)  
2nd Sunday: Communion Praise (contemporary worship)  
4th Sunday: All Age Worship  
5th Sunday: United service with Levens & Milnthorpe  
6.30pm: 2nd Sunday: Open to God  
Info: [stpetersheversham.org](http://stpetersheversham.org)

#### LEVENS ST JOHN

10.00am: Parish Communion:  
3rd Sun: All-age worship; 5th Sun: United service at Heversham  
Info: [levens.org.uk](http://levens.org.uk)

#### MILNTHORPE ST THOMAS

8.00am: BCP Holy Communion 1st and 3rd Sundays  
11.00am: Main Services 1st, 2nd and 3rd: CW Communion  
4th Sunday: Morning Praise  
5th Sunday: United service at Heversham  
11.00am: every week Sunday Circle for children  
Info via: [stpetersheversham.org](http://stpetersheversham.org)

#### STORTH VILLAGE CHURCH

10.30am: Methodist and Anglican services each week  
Info: Revd David Stretton 01524 761397; Revd David Cooper 01524 761319

#### METHODIST SERVICES

ARNSIDE  
10.30am see website for details  
[arnsidemethodistchurch.org.uk](http://arnsidemethodistchurch.org.uk)

MILNTHORPE  
3.00pm 2nd & 4th Sunday of month  
at Methodists in Milnthorpe, M:Hub,  
Beetham Road

LEVENS  
10.30am [levens.org.uk](http://levens.org.uk)  
Info: Revd David Stretton  
01524 761397 or 015395 63179

#### ROMAN CATHOLIC SERVICES

ARNSIDE  
OUR LADY OF LOURDES  
Saturday, 5.30pm

MILNTHORPE  
CHRIST THE KING  
Sunday, 10.30am

Info: Fr Philip Smith 015395 32731  
or Chris Noble 01524 762427

### ADVERTISE in THE GATEWAY

The Gateway has a circulation of 500 copies to every home in the parish and to local businesses.  
To book space call John on 015395 62648  
or email [gatewayads@btinternet.com](mailto:gatewayads@btinternet.com)

#### WESTMORLAND COURT ARNSIDE

NURSING & RESIDENTIAL CARE HOME

46 roomed home set in its own quiet grounds.  
Providing a high standard of care  
within the community

Please ring Jackie or Ann  
for information or a friendly chat,  
on 01524 - 761291

#### Beetham Church Heritage Trust

is registered with the donation website  
at [easyfundraising.org.uk/causes/bcht](http://easyfundraising.org.uk/causes/bcht)

Please help to support us by using  
this for your online shopping...

...it will cost you nothing and  
we have raised £347 so far!

For details of the Friends of Beetham Church  
and how to become a member visit  
[beethamstmichaelandallangels.co.uk](http://beethamstmichaelandallangels.co.uk)

# HOUGHTONS



## HOME IMPROVEMENT CENTRE

Park Road, Milnthorpe  
T: 015395 63904

Open 7 days

Trade & Retail

Large stock areas covering

Commercial & DIY Power Tools

Hardware

Electrical & Household Goods

Gardening Tools & Equipment

Sheds, Seeds & Soil

Fencing & Paving

Timber, Plumbing, Glass, Key Cutting  
Paints, Wallpapers & Decorating sundries

Paint Mixing Service

Gifts & Cards for all occasions

#### FISHWICKS LIMITED

Established 1935

### Fishwicks Funeral Service

Beetham Hall, Beetham,  
Milnthorpe, Cumbria, LA7 7BQ

Tel: 015395 63108

Kirkby Lonsdale: 015242 71400

Independent Family Business  
24 Hour Service  
Private Chapels of Rest  
Crematorium  
Pre-paid Funeral Plans

[www.fishwicksltd.co.uk](http://www.fishwicksltd.co.uk)

### HALE GARAGE CO

(Practical Automobile Engineers)  
Established 80 years

Main A6 Road, Hale  
LA7 7BH

New & Used Car Sales Service & Repairs

Full Dealer Computerised Diagnostics Equipment

MOT Testing, Body Repairs, Tyres

Batteries, Exhausts & all your Motoring needs

Free collection or loan car service

015395 - 62173 / 62839

### SOUTH LAKELAND AGE UK LUNCH CLUBS (12 for 12.30pm)

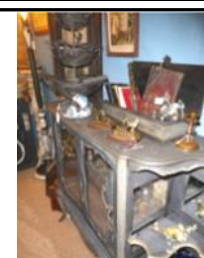
Arnside Lunch Club 1st Friday of month at The Albion, and  
Sandside Lunch Club 3rd Wednesday of month at The Ship,  
Christine Marland, 01524 761566

Storth Club 2nd Thursday of month at The Kingfisher,  
Norah Padgett 015395 62887

Helpline: 01539 728180; [www.ageuk.org.uk/southlakeland](http://www.ageuk.org.uk/southlakeland)



Huw & Lorraine  
welcome you to  
Beetham Village Store  
& Tea Room  
Closed Tuesday & Wednesday  
Tel: 015395 62389



### November deadline for The Gateway

The Gateway always welcomes news and other items of interest to our readership.  
The deadline for contributions for the November edition is

**Wednesday 31st October**

Please send contributions to the editor, Jenny Marks, Email: [beethamnews@aol.com](mailto:beethamnews@aol.com); Tel: 015395 62559

View current & past editions of The Gateway in full colour at [www.beethamstmichaelandallangels.co.uk](http://www.beethamstmichaelandallangels.co.uk)