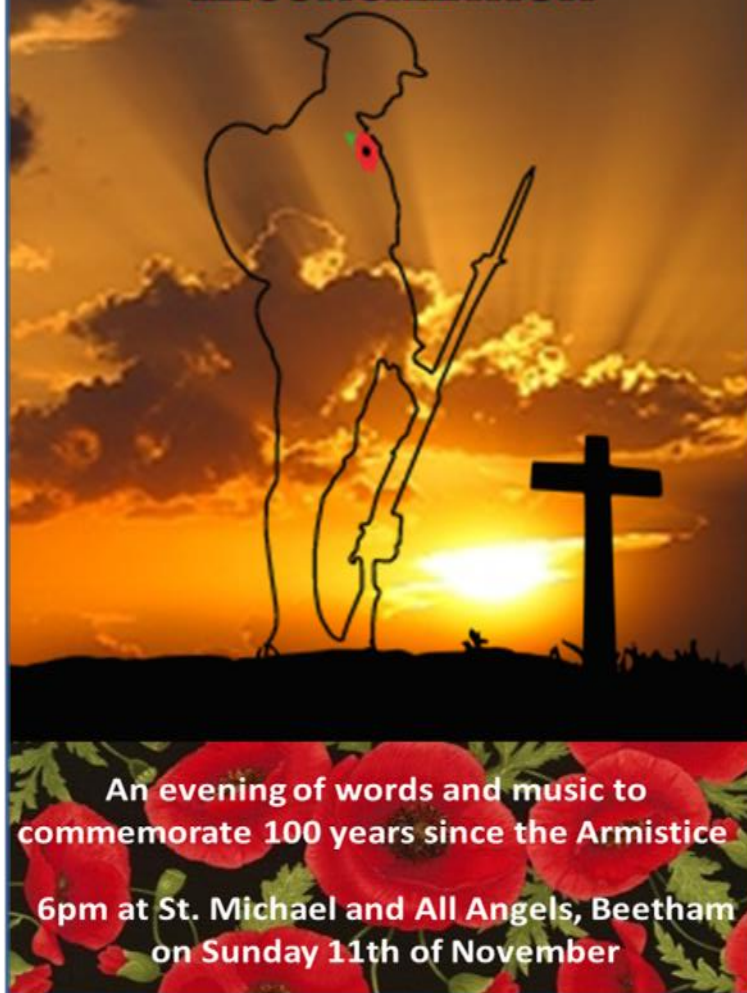


**REMEMBRANCE, REFLECTION,
RECONCILIATION**



Regal Russia

Friday 16th November, 7pm

John Falkingham

presents his illustrated travelogue of Russia
at The Heron Theatre

Tickets £8, including wine & nibbles

from John Lomax on 015395 62648 or online at

www.beethamstmichaelandallangels.co.uk



**Beetham School
Christmas Fair**
Saturday
1st December
11am—2pm
with Father Christmas,
plenty of stalls, games,
and refreshments,
and the draw for the Church
Grand Hamper Raffle

NAFAS 2018
Floral Demos
*10% discount on all purchases on these evenings
7.30pm in The Garden Cafe

29TH NOVEMBER:
'FESTIVE FLORALS'
WITH DON BILLINGTON

6TH DECEMBER:
'SEASONAL SPARKLE'
WITH JOHN DALTON

Tickets are £9.99 Each Including Festive Refreshments

*Excluding vouchers & food

Open 7 days a week
9.00-5.00, Sunday 10.30-4.30
We are on the A6
one mile South of Milnthorpe

Beetham
NURSERIES

LATE NIGHT SHOPPING, 5TH DECEMBER, 5PM - 8.30PM
015395 63630 :: www.beethamnurseries.co.uk

THE GATEWAY

PARISH MAGAZINE OF
ST MICHAEL AND ALL ANGELS, BEETHAM

NOVEMBER 2018



November – dull, grey and dank. The butt end of the year when hope of further golden autumn days has faded, when trees are left denuded of their foliage, gardens devoid of their flowers, and the approach of winter can no longer be denied.

November is too, by tradition, a time when we remember the dead. 1st November is the Feast of All Saints, when we remember and give thanks for those who in their time lived lives of vision, courage and self-sacrifice. Then 2nd November sees the Commemoration of All Souls, the day when we remember the departed, those whom we have loved and see no longer. And death remains the predominant theme on 11th November, when we remember the dead of the First and Second World Wars along with all those who have met their deaths as a result of warfare across the ages.

11th November this year, however, has a special poignancy, as it marks the 100th anniversary of the end of First World War hostilities at 11-00 on 11th November 1918. We can only imagine what the people of our own country, and indeed of the other combatant countries, must have felt on that day. There was no doubt a general sense of both relief and rejoicing that the war, which had dragged on for more than four years, was at last over, and excitement that those who had been fighting in the thick of battle would soon be returning home. There was also, it seems, a sense of hope that the end of World War One would mark the end of all wars and the inauguration of a lasting peace. But for many the end of the war could not have been a time for celebration, for there were thousands upon thousands of individuals and families in our own country and elsewhere for whom 11th November 1918 was just another day of mourning for those who had lost their lives, a day on which the sense of bereavement and loss was doubtless felt more keenly than ever.

And where does all that leave us a hundred years on? Well, we now know that the end of the First World War did not mark the end of all wars. We know that there was a Second World War from 1939 to 1945 and that wars in which women, men and children still lose their lives continue to rage the world over – Syria, Afghanistan, Libya, Yemen. But all that must never stop our nation, and all nations of the world, from striving for peace, from striving to create the fairer and more just world order for which the millions killed in World War One laid down their lives.

It is right and proper, therefore, that on the 100th Anniversary of the end of World War One we should remember with gratitude those who lost their lives in the pursuit of lasting peace and the creation of a better world. That we can do by wearing our Royal British Legion poppies in the days leading up to 11th November and thus supporting the Legion's on-going work with former members of the Armed Services. All members of our community are also invited to join in the Act of Remembrance at the Beetham village war memorial at 09.45 on Remembrance Sunday, followed by a service in St Michael's at 10.00. At 18.00 that same evening in the church there will be a service of music, readings and prayers for Remembrance Day, followed by the ringing of the church bells in unison with church bells across the country, commemorating the way in which church bells were rung in unison to mark the Armistice on 11th November 100 years ago.

We will remember them.

David Peacock



Photo: Dave Brown

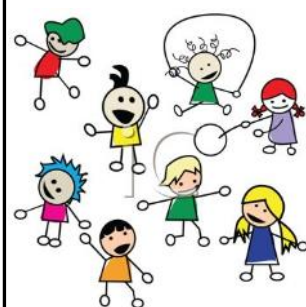
www.beethamstmichaelandallangels.co.uk



STORTH MOTHER & TODDLER GROUP

Heron Hall, Storth
Tuesdays and Thursdays, 10am - 12noon
All welcome

Enquiries to Tina on 015395 - 62281



Beetham CE School
Toddler Group
Every Friday, 2pm-3.15pm
in the school

Lots of Play and Fun!

All Babies & Toddlers Welcome

C.E.S.

Electrical Services
Installation ~ Inspection
~ Testing

015395 63303
07903 161602

Friendly reliable service



MARK ECCLES

ME Electrical Contractors
All aspects of electrical work undertaken
07866 510 079

Graham Pooley WINDOW CLEANER

1 Castle Riggs, Kendal
01539 - 721981

NEIL TAYLOR

Painter, Decorator
& Paperhanger

Tel: 015395 - 64411
Mobile: 07778 - 467521

ANDREW COWPERTHWAIT

PAINTER DECORATOR
PLUMBER & TILER
01524 - 762443

IAN BRADSHAW INTERIOR & EXTERIOR PAINTER & DECORATOR

015395 62089
07968 390396

MARTIN PAINTER & DECORATOR

07881 895909
01524 61834

martin.painting.decorating@gmail.com

T.T. CARPETS

RED BARN
HARMONY HILL
MILNTHORPE
015395 - 62898

Lakeland & Lunesdale
Physiotherapy &
Sports Injury Clinic
Milnthorpe



015395 64727

clinic@physio-sportsinjuries.co.uk
www.physio-sportsinjuries.co.uk

The Friends of Beetham Church organise events throughout the year to raise funds for the upkeep of the church and to maintain the strong sense of community that exists in and around St Michael & All Angels. Friends Membership is by Annual subscription of £10, a one-off payment of £100 for Life membership, or £150 for joint Life members.



If you would like to play a part in maintaining our beautiful church for future generations please pick up a leaflet at the back of church, download the forms from the Heritage Trust page at beethamstmichaelandallangels.co.uk or email beethamnews@aol.com for a Membership pack.

LUNESDALE HOUSE

RESIDENTIAL
RETIREMENT HOME
Hale, nr Milnthorpe
015395 - 63293
Registered with The National Care
Standards Commission

BM Welding & Fabrication

Gates Railings & Balustrades
Stainless Aluminium Glass
Agricultural Work
On site Welding



07971 080823



benmerckel13@gmail.com

C. M. SIGNS

Your local time-served
sign-writing specialists
015395 - 63000

L. M. Baverstock Ophthalmic Opticians

The Square, Milnthorpe
015395 - 62633



Flowers for all occasions

Woodlands Nurseries

Crooklands
01539 567273

Gas & Oil Boiler,
Gas Fire Repairs & Maintenance



015395 - 63562

MARK N. SHAW

Chaplows Heating Services

Boiler Services
GAS OIL LPG



015395 - 63017
07831 - 223140



TONY GIBSON

SPECIALIST IN:

- STONEMASONRY -
- PLASTERING -
- ALL ASPECTS
OF BUILDING -

015395 64702
07815 888 564

www.tgibsonbuilderscumbria.co.uk

FOOTCARE AT HOME

Tracey Garrett BSc MinstChp
Nail trimming ~ Ingrown nails
Corns ~ Callus ~ Diabetic foot
Care and advice
For Home Visit tel 07766 167018

Drop-in Memory Clinic

For memory assessment advice
Monday 2-4pm
at Park View Surgery, Milnthorpe
Tel: 01539 715555

SUPPORT OUR LOCAL ADVERTISERS

To book space from £30
per year call John on
015395 62648
or email

gatewayads@btinternet.com

Visit our website at
beethamstmichaelandallangels.co.uk
for deadlines and more details

THE PARISH OF ST. MICHAEL AND ALL ANGELS, BEETHAM

Priest-in Charge
Lay Chair/Churchwarden
Churchwarden
Churchwarden
PCC Secretary
PCC Treasurer

Vacancy
Brian Smalley
Jenny Marks
Ian Stirrup
Dorothy MacLeod
John Lomax

Church Flowers
Bell Tower Captain
Beetham C of E School

Dianne Lomax
Jenny Marks
Wendy Nicholas

"The Gateway" - Editor
- Business Manager

Jenny Marks
John Lomax

015395 64778
015395 62559
015395 64320
015395 62062
015395 62648

b.e.smalley@btinternet.com
jenny.marks@btinternet.com
ianstirrup02@gmail.com
admdhm@live.co.uk
j.d.lomax@btinternet.com

015395 62648
015395 62559
015395 62515

diannelomax@btinternet.com
jenny.marks@btinternet.com
head@beetham.cumbria.sch.uk

015395 62559
015395 62648

beethamnews@aol.com
gatewayads@btinternet.com

Church Services at Beetham in November

Date	Time	Service
Sun 4th Nov <i>All Saints Day</i>	10am	Parish Communion
	6pm	All Souls Evensong
Wed 7th Nov	10am	Public Worship with Communion by Extension
Fri 9th Nov	9.15am	School Remembrance in church
	9.30am	Royal Fusiliers Muster
Sun 11th Nov <i>Remembrance Sunday</i>	9.45am	War Memorial Service
	10am	Remembrance Eucharist
	6pm	Remembrance, Reflection, Reconciliation
Fri 16th Nov	9am	School Assembly
Sun 18th Nov <i>2nd before Advent</i>	10am	Parish Communion
	6pm	Evensong
Fri 23rd Nov	9am	School Assembly
Sun 25th Nov <i>Christ the King</i>	10am	Parish Communion
	6pm	Evensong
Fri 30th Nov	9am	School Assembly
Sun 2nd Dec <i>Advent Sunday</i>	10am	Parish Communion
	6pm	Evensong

Please check Church noticeboards or
beethamstmichaelandallangels.co.uk for any changes

October Work Parties

During October there has been a special planting of bulbs near the church main entrance. The bulbs were donated in memory of Anne Marshall-Lee who died earlier this year. Anne often sat on the bench near the porch with her dog and it is hoped that in the Spring people using the bench will be surrounded by daffodils and crocus



Thanks also go to Dennis Wright for a series of bonfires to clear the piles of brash wood by the New Burial Ground entrance, to enable this area to be improved in the new year

Baptism

Esme Lilith Davies,
daughter for Jane & Tom,
was baptised on Sunday 14th October

We welcome her into Beetham Church



Harvest Appeals

Manna House would like to thank everyone who donated harvest gifts via the church and the school for the homeless in the South Lakeland area. There was a tremendous response to the appeal for food, toiletries, clothing and bedding this year

Thank you also to all who donated to the Indonesian Earthquake & Tsunami Appeal on Harvest Sunday. A total of £162.50 was generously raised and sent to the DEC

Remembrance Weekend - Help Needed

Exhibition Artefacts

On 10th & 11th November there will be an exhibition of World War I artefacts in the church, including items kindly on loan from the Imperial War Museum North. Although we are mainly looking for WWI items, there will also be some artefacts relating to WWII. If you have any items that would be of interest that you would be willing to allow us to display for the weekend please contact Jenny on 015395 62559

Stewarding

The exhibition will be stewarded all weekend and precious items will be displayed behind glass. If you are available to help with the stewarding for an hour on either day, please sign the sheet at the back of the church or contact one of the churchwardens

Sponsoring a Remembrance Cross

The Beetham Roll of Honour for the two World Wars will be read out at the War Memorial on 11th November. In remembrance of the fallen, wooden crosses will be planted along the footpath in the churchyard. If you would like to sponsor a Cross in memory of one of the Beetham servicemen or one known to your family, please sign or add your details to the list at the back of the church. Donations for the Crosses will go to the Royal British Legion





REMEMBRANCE, REFLECTION, RECONCILIATION

BEETHAM CHURCH

10th-11th November 2018

Exhibition of World War 1 artefacts including items from the Imperial War Museum North, 'There But Not There' silhouettes, school displays, flower arrangements, and WW1 music from the Beetham Band. Open on Saturday 10th November from 10am-5pm and Sunday 11th November from 11am-6pm. Free entry.

Service of Remembrance on Sunday 11th November at 9.45am at Beetham War Memorial, with laying of wreaths, Beetham Roll of Honour, two minute silence, and the Last Post.

'Remembrance, Reflection, Reconciliation'

A poignant service of words and music to commemorate the centenary of the WW1 Armistice. The Service begins at 6pm on Sunday 11th November and concludes with the Last Post and a Touch of Bells as part of the international 'Battle's Over' tribute



THERE BUT NOT THERE

COMMEMORATE. EDUCATE. HEAL



Harvest Supper

The Harvest Supper was held in the Heron Corn Mill Barn on 7th October, with a record attendance. Huge thanks go to Alison Thompson and her team once again provided a wonderful hotpot supper with all the trimmings (and second helpings for anyone that had room), and followed by apple crumble

This year's entertainment was another Sandy Lofthouse classic (with a little help from Shakespeare) - The Masque of the Radish. We were delighted to welcome Anne Lofthouse back to see the results of her humorous updates to the original script. We missed her directing experience this year, but the audience still showed their appreciation - particularly of the fairies BryTannia, Dense Blossom, and 'Arryel, under the strict leadership of Titania and her elf, Puck. The giant radish, stolen by Lady & Joe MacBeth, was returned to the rightful champion grower, Hamlet, and the masque ended happily with the wedding of Romeo and Juliet

Many thanks go to all the thespians, to Anne Clarke for the costumes, to Tess Rowlands for the wigs, to Ian Stirrup for building the set, to Geoff Field on keyboards, to Sarah Easton for the technology, to the Friends for setting up and clearing away, to the Revd Geoff Turner for the Grace, to Colin & Julie Clarke for organising the raffle, to Andy MacLeod for the photography, and finally to the audience for joining in with the singing and heckling in all the right places!



Friends Sunday

Friends Sunday was held on 14th October, and thanks go to The Revd Geoff Turner for his thought-provoking - and humorous - sermon on the theme of friendship. The service was followed by the Friends AGM, where the Chairman, John Lomax, reminded everyone of the successful work that the Friends do to maintain the fabric of the church in raising funds for the Beetham Church Heritage Trust. The Friends Committee is also responsible for organising social and church events, and in the past twelve months £4,211 has been raised for the BCHT and Church funds

After the AGM, many of the Friends joined together in The Wheatsheaf for a very enjoyable lunch, at which The Revd Geoff Turner and The Revd Susan Turner were guests-of-honour

It was then a short walk back across to the church for a special Organ Recital given by Geoff Field to celebrate Friends Sunday. Friends of Beetham Church were joined by audience members from all around the area to hear Geoff's virtuoso performance, in a delightfully mixed programme. Our grateful thanks go to Geoff for donating his time and talent! Thank you to all who supported such a wonderful event and gave so generously to raise over £220 for the Beetham Church Heritage Trust





What an exciting time we have had at school since writing the last School Corner...

Early Years and KS1 greatly enjoyed their first outdoor activity day. In the morning they had lessons in archery provided by Northern Archery. This took place on our school field and everyone was taught how to hold the bow and aim at the target. In the afternoon the children took part in a multi-skills lesson with PE coach, Matt Harris, where they tried a range of different sports and had fun playing new games.

KS2 had a wonderful day canoeing on Windermere. They took the ferry from Bowness Pier and met their instructors before having some paddling instruction and then setting off to paddle to Thompson Ground, one of the small islands in the lake. On arrival they were taught how to make their own pizzas, which they then cooked over an open fire. After lunch the children paddled round Belle Isle before playing lots of fun canoe games and having the opportunity to jump into the lake! Both of these activity days were funded through our PE grant which we receive from the DFE to help us to provide exciting outdoor and adventurous activities for all the children in school.

As part of our RE curriculum, children in KS2 have been learning about Islam and considering what life is like for Muslims in Britain. We had a visit from Imran Kotwal from Muslim Learner Services who provides assemblies and workshops for schools. He led an assembly for all the children giving an overview of Islam and teaching them about the '5 Pillars of Islam' using video clips and artefacts. Imran then worked with KS2 to talk with them about how Muslims worship and finished off with a workshop about Hajj, the pilgrimage to Mecca. After school Imran led a training session on Islam for 25 staff from Beetham and Burton Morewood Schools. It was a privilege to have Imran in school working with everyone to develop our knowledge of Islam and also giving us the opportunity to ask questions. This is a really important part of our work at school as it helped to give us a different perspective on tolerance and respect which are two of our Christian values.

We had a fantastic morning on Friday 19th when Tim Farron MP came to open our new classroom. The classroom is called Beetham Lodge and was built and installed by Lune Valley Timber Buildings. To have an additional classroom is a great achievement for our village school and provides us with a space that can be used for teaching and learning but can fulfil other purposes such as a room for meetings, music lessons etc. We were delighted that Tim could open the classroom for us and it was lovely to welcome so many visitors to share in this special event. Everyone who attended planted a daffodil bulb to celebrate the opening and signed a special book to mark the occasion.

We are now busy preparing our church display to commemorate 100 years since the Armistice and linking this with this half term's Christian value of Hope.

On Thursday 15th November we are holding an Open Day, 10.30-Noon and 5.30-7.00pm, for prospective families but also for anyone who would like to come and look around our school and visit our new classroom. Please pass this information on to anyone who you think may be interested. We hope to welcome members of our church and village community to school on this day.

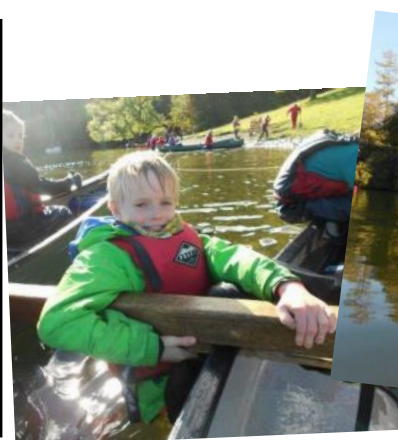
Best Wishes
Wendy Nicholas

Beetham CE School 200 Club Results

	Draw 233	Draw 234
1st	Klijn	Burn
2nd	Halhead	Christou
3rd	Isles	Heyes

Fancy a flutter? Join our club for only £4 a month with the chance to win £70, £25 or £10 every month. The form to join the lottery is now available on the school website.

All welcome ~ be in it to win it!



SCHOOL OPEN DAY

**Thursday
15th November
10.30am-Noon
and 5.30-7pm**

Learning together
Caring for everyone
Achievement for all

Beetham & Beyond

November Programme



art dance
the HERON theatre
music film

Sunday 4th November
Chroma Harp Duo Matinée 2.30pm
Classical Harps

Thursday & Friday 8th & 9th November 7.30pm
Laugh Out Loud theCompany

Laughter is the best medicine, or so they say. theCompany will share their prescription from legends such as Noel Coward, Victoria Wood, Alan Bennett, Stoppard, Lewis Carroll, Shakespeare & Willy Russell

Tuesday 13th November 2.30pm
Degas, Passion for Perfection Exhibition on Screen

Saturday 17th November 7.30pm
The Wit & Songs of Noel Coward Peter Gill

Returning to the Heron Theatre, pianist & entertainer Peter Gill presents a tribute to the wit and song-writing talent of that most English of Englishmen, Noel Coward

Friday 23rd November 7.30pm
Murder - Just What the Doctor Ordered Isosceles

A trail of terror leads from West Port to the dissection table of scientist and anatomist supreme, Robert Knox, who buys bodies to advance medical knowledge, but a price must be paid...!

Friday 30th November **FILM AT THE HERON** 7.30pm
The Post (2017) [12A] - 1 hour 56 mins

A cover-up sees the Washington Post's first female publisher (Meryl Streep), and its hard-driving editor (Tom Hanks) joining forces

Select your seats and book online at www.theherontheatre.com
Box Office open Fridays from 10am until 12noon, 015395 64283

the HERON theatre, Stanley St, Beetham, LA7 7AS



Exhibition on Screen at the HERON theatre
2.30pm Tuesday 13th November, tickets £7.50

Degas, Passion for Perfection

Filmed from the streets of Paris to the heart of an exhibition at the Cambridge Fitzwilliam Museum whose extensive collection of Degas' works is the most representative in Britain. With exclusive access to view rare and diverse works, written accounts by friends, and his own letters, this tells a fascinating story of Degas' pursuit for perfection through both experimentation with new techniques and lessons learnt from studying the past masters. Degas was consumed by obsessive principles and failing eye sight but his determination to capture everyday life was always evident

Est.1979
Kent Estuary Travel
24 Hours.
Competitive Rates

Local family private hire
company founded in 1979

All drivers, male and female, have
level 2 nvq in road vehicle
passenger driving and are fully
licensed with SLDC.

We pride ourselves in having a
friendly and reliable service

For a quote please contact us on
015395 62917 or
07974 108501



theWI
INSPIRING WOMEN

Beetham WI – What a Busy October!!

I think October has been one of the busiest months in the 100 year history of Beetham WI with certainly a wide variety of activities.

We started the month with a fun evening singing in the company of Pandora's Handbag; we've had a Federation Group meeting, plus 6 of us were then stewards at the Federation AGM.

This was a day full of surprises - Anne needed to refresh her First Aid skills and I was presented with a certificate to commemorate our 100th anniversary. The highlight of the day was when Wendy and I were presented with the Golden Jubilee Plaque and the Gladstone Trophy, for County Show successes - little did I realise that Beetham ladies were also in second and third places - well done to Alison and Frances!

At the end of the month we held our Centenary Celebration Meal, at which there was much laughter amongst friends, which is a true reflection of the Beetham community.

The month finished with an evening working with Days for Girls, making re-useable sanitary items for girls across the world, less fortunate than ourselves. Hopefully this will be an ongoing project.

Alongside all of this we have been focusing on our 100 Challenges - we have painted pictures, ridden bicycles, rung the tower bells in Bob Minor and achieved 100 minutes of aerobics... non-stop, but not all at the same time!!!

November is our AGM, when we can fully reflect on our centenary year

Sarah Easton, WI President



What's On Guide

Enjoyed the Great British Bake Off? Try

Beetham Village

Coffee Morning in Church

Wednesday 7th November

10.35am to 11.45am

Delicious homemade cakes, coffee and chat

There is no charge & all are welcome

Messrs Johnson & Hebditch present.

A CHRISTMAS CAROL
Being a Ghost-Story of Christmas



Comedy Drama

the
Old
Laundry
theatre

Bowness-on-Windermere
Box Office 015394 40872

Friday 21st December - 7.30pm

Saturday 22nd December - 2.30pm and 7.30pm

QUEST

A friendly group, we meet to hear talks,
often with slides, 2nd & 4th Thursdays,
in

The Athenaeum, Leasgill at 10am

All are welcome!

8th November : Glenys Marriott
'Headway ~ The Brain Injury Association'

22nd November : Colin Penny
'History of Lancaster Castle'

Contact Patricia McPoland 015395 62765
McPoland@btinternet.com

Eversley
Choir

Friday 23rd November

at 7.30pm

in Borwick & Priest Hutton Memorial Hall

'A Flourish of Folk Songs'

including

Vaughan Williams: In Windsor Forest

John Rutter: The Sprig of Thyme

Matyas Seiber: 3 Hungarian Folk Songs

Tickets from Choir members (children & students free)
01539 621559 ~ www.eversleychoir.org

Annual Hospice Coffee Morning

Saturday 17th November

9.45-11.45am in Storth Village Hall

Entry £1 including coffee and biscuits

All proceeds in aid of St John's Hospice



ARNSIDE HIGHLIGHTS

Arnside Educational Institute, Church Hill, Arnside

Sunday 18th November at 7.30pm

Play - 'Brilliance' - Tickets £8 for adults, £4 for under 18s

Saturday 1st December

Films - 'The Nutcracker and the Four Realms' at 4pm

'Bohemian Rhapsody' at 7.30pm - Tickets £7 & £5 (u18s)

Tickets: Sue Hayward 01524 762254, suediane57@gmail.com

**KENDAL SOUTH CHOIR
AND ORCHESTRA**

**JOHN RUTTER
THE SPRIG OF THYME
HOWARD GOODALL
ETERNAL LIGHT: A REQUIEM**

Directed by Don Gillthorpe
with Ian Pattinson & Geoffrey Field (keyboards)

St Thomas's Church, Kendal
Saturday 24 November, 7.30pm

Tickets £12 (under 18s free)
from Made in Cumbria (Kendal),
Fantastic Kendal,
choir members or at the door
www.kendalsouthchoir.org.uk



REMEMBER

Remember? I remember
the excitement of November
when flames lit up the night sky.

For weeks we went out chumping,
eager wood gatherers hunting
fallen branches; broken chairs.

"Penny for the Guy" we said,
a man of straw with turnip head
dressed in our grandpa's old clothes.

Home-made parkin, dogs barking
as rockets "whooshed" a warning,
releasing a shower of stars.

Next day we raked the embers
and then started to remember
the excitement Christmas brings.

© Sheila MacInnes

Heron Corn Mill

Barrow Community Kitchen

Barrow Community Kitchen is a charity offering a
refuge for people who are struggling financially or
who feel isolated and cut off. The centre is
inclusive and non-judgemental and offers a
friendly welcome, and we hope to involve the Kitchen in the Grain
Chain project.

Santa is due to visit the centre in mid-December, so the staff
volunteers are seeking donations of toys, chocolates and sweets
for the local children. Also donations of tinned food and non-
perishable food items for their annual Christmas hampers which
are given out to the elderly, isolated, and families on a low
income.

Even a small donation would go a long way, so if you're able to
help please bring donations to us during the Corn Mill regular
office opening hours and we'll be sure to pass them along.

Thank you



Heron Corn Mill, Mill Lane, Beetham ~ www.heronmill.org, 015395 64271

Beetham Parish Council

The next meeting will be on
Monday 5th November
at 7pm
in **Storth Village Church**

Members of the public are welcome to attend
Minutes of previous meetings and details of the
current East and West Ward Councillors can
be found on the website at www.beethampc.co.uk

Just a little



or so about the

Beetham Band as this is a packed Gateway issue!

We continue to happily play every Saturday morning at
10.30am. We will next be performing during the
Remembrance weekend with a programme of WW1
songs and melodies. Then it is headlong into the festive
season with a selection of carols and film music!

New members always welcome.
Please contact Tess on 015395 63254



The Church of England
around the Kent Estuary

Sunday Worship in the Kent Estuary area

ARNSIDE ST JAMES

8.00am: BCP Holy Communion
10.30am: Morning Worship, usually with Communion
2nd Sunday: All-age Worship
4.30pm: 2nd Sunday Celtic Communion
Info: arnsidechurch.webplus.net Revd David Cooper 01524 761319

BEETHAM ST MICHAEL AND ALL ANGELS

10.00am: Parish Communion
6.00pm: Sung Evensong (5th Sunday: said BCP Evening Service)
Info: beethamstmichaelandallangels.co.uk

HEVERSHAM ST PETER

8.00am: BCP Holy Communion
2nd, 4th and 5th Sundays
9.30am: Main Service:
1st and 3rd Sundays: Parish Communion (CW)
2nd Sunday: Communion Praise (contemporary worship)
4th Sunday: All Age Worship
5th Sunday: United service with Levens & Milnthorpe
6.30pm: 2nd Sunday: Open to God
Info: stpetersheversham.org

LEVENS ST JOHN

10.00am: Parish Communion:
3rd Sun: All-age worship; 5th Sun: United service at Heversham
Info: levens.org.uk

MILNTHORPE ST THOMAS

8.00am: BCP Holy Communion 1st and 3rd Sundays
11.00am: Main Services 1st, 2nd and 3rd: CW Communion
4th Sunday: Morning Praise
5th Sunday: United service at Heversham
11.00am: every week Sunday Circle for children
Info via: stpetersheversham.org

STORTH VILLAGE CHURCH

10.30am: Methodist and Anglican services each week
Info: Revd David Stretton 01524 761397; Revd David Cooper 01524 761319

METHODIST SERVICES

ARNSIDE
10.30am see website for details
arnsidemethodistchurch.org.uk

MILNTHORPE
3.00pm 2nd & 4th Sunday of month
at Methodists in Milnthorpe, M:Hub,
Beetham Road

LEVENS
10.30am levens.org.uk
Info: Revd David Stretton
01524 761397 or 015395 63179

ROMAN CATHOLIC SERVICES

ARNSIDE
OUR LADY OF LOURDES
Saturday, 5.30pm

MILNTHORPE
CHRIST THE KING
Sunday, 10.30am

Info: Fr Philip Smith 015395 32731
or Chris Noble 01524 762427

ADVERTISE in THE GATEWAY

The Gateway has a circulation of 500 copies to every
home in the parish and to local businesses.
To book space call John on 015395 62648
or email gatewayads@btinternet.com

WESTMORLAND COURT ARNSIDE

NURSING & RESIDENTIAL CARE HOME
46 roomed home set in its own quiet grounds.
Providing a high standard of care
within the community
Please ring Jackie or Ann
for information or a friendly chat,
on 01524 - 761291

Beetham Church Heritage Trust

is registered with the donation website
at easyfundraising.org.uk/causes/bcht
Please help to support us by using
this for your online shopping...
...it will cost you nothing and
we have raised **£347** so far!
For details of the Friends of Beetham Church
and how to become a member visit
beethamstmichaelandallangels.co.uk

HOUGHTONS



HOME IMPROVEMENT CENTRE

Park Road, Milnthorpe
T: 015395 63904

Open 7 days

Trade & Retail

Large stock areas covering

Commercial & DIY Power Tools

Hardware

Electrical & Household Goods

Gardening Tools & Equipment

Sheds, Seeds & Soil

Fencing & Paving

Timber, Plumbing, Glass, Key Cutting
Paints, Wallpapers & Decorating sundries

Paint Mixing Service

Gifts & Cards for all occasions

FISHWICKS LIMITED

Established 1935

Fishwicks Funeral Service

Beetham Hall, Beetham,
Milnthorpe, Cumbria, LA7 7BQ

Tel: 015395 63108
Kirkby Lonsdale: 015242 71400

Independent Family Business
24 Hour Service
Private Chapels of Rest
Crematorium
Pre-paid Funeral Plans

www.fishwicksltd.co.uk



HALE GARAGE CO



(Practical Automobile Engineers)
Established 80 years

Main A6 Road, Hale
LA7 7BH

New & Used Car Sales Service & Repairs

Full Dealer Computerised Diagnostics Equipment

MOT Testing, Body Repairs, Tyres

Batteries, Exhausts & all your Motoring needs

Free collection or loan car service

015395 - 62173 / 62839

SOUTH LAKELAND AGE UK LUNCH CLUBS (12 for 12.30pm)

Arnside Lunch Club 1st Friday of month at **The Albion**, and
Sandside Lunch Club 3rd Wednesday of month at **The Ship**,
Christine Marland, 01524 761566

Storth Club 2nd Thursday of month at **The Kingfisher**,
Norah Padgett 015395 62887

Helpline: 01539 728180; www.ageuk.org.uk/southlakeland

Huw & Lorraine welcome you to
**The Old Beetham Post Office
& Tea Room**

Closed Tuesday & Wednesday

Tel: 015395 62389



December deadline for The Gateway

The Gateway always welcomes news and other items of interest to our readership.
The deadline for contributions for the December edition is

Wednesday 28th November

Please send contributions to the editor, Jenny Marks, Email: beethamnews@aol.com; Tel: 015395 62559

View current & past editions of The Gateway in full colour at www.beethamstmichaelandallangels.co.uk