

Beetham Church
Shrove Tuesday Supper
& Quiz Night

28th February
Heron Corn Mill Barn

Get your team in training and brush up
your trivia for the 2017 challenge!

*Look out for details in next
month's edition of The Gateway*



Let's Grow
Vegetables

8TH FEBRUARY 2017

'Let's Grow Vegetables'
7pm in The Garden Cafe

We're delighted to announce that we're welcoming Margaret Robinson back to Beetham Nurseries on 8th February 2017 to talk to us about growing vegetables. Her new talk is entitled 'Let's Grow Vegetables' and promises to be a sell out event

For those of you who don't know, Margaret and the Robinson family are experts in growing giant vegetables and have won an abundance of awards over the years. If you would like to learn how to get the very most out of your vegetable growing, then this is definitely the talk for you.

Tickets are £6.95 (each person) and include tea/coffee and homemade cake. To book call 015395 63630 or pop in and get your tickets from the Information Desk

Open 7 days a week

9.00-5.00, Sunday 10.30-4.30
We are on the A6
one mile South of Milnthorpe

EST 1984
Beetham Nurseries
PLANT, GARDEN CENTRE, CAFE & FOOD SHOP

015395 63630 :: www.beethamnurseries.co.uk



THE GATEWAY



PARISH CHURCH OF ST. MICHAEL AND ALL ANGELS, BEETHAM

LINDA'S LETTER

JANUARY 2017

"I am setting before you today life and death, blessings and curses: choose life!" Deuteronomy 30:15

Standing at the cross roads, is that how you feel at the start of this New Year? I know 2016 has been for some of you a difficult year - while for others there has been cause for celebration. January 1st is the time of year when we endeavour to wipe clean a few slates, and start off on a better, perhaps more generous footing. We hope and pray for a better more stable world and yet we also know that soon old routines must be taken up again; we have the coldest and bleakest months of the year yet to come. Some of our problems haven't been thrown out with the turkey carcass, for none of us knows what is waiting for us just around the corner and for that we should be grateful. Perhaps this day like no other has the ability to touch something deep within us. The turn of the year, and new beginnings. Inevitably, there is a sense of looking back, and looking forward, and taking stock. There is a sense of a turning point, a doorway, a threshold.

In his poem *The Road Not Taken* Robert Frost picks up on this theme:

*Two roads diverged in a wood, and I -
I took the one less travelled by,
And that has made all the difference.*

There is a tremendous sense there of a choice having been made - maybe almost arbitrary, accidental, on the toss of a coin - but it has shaped who you are and what you are now doing. And it may have been such a casual, unimportant choice. Life is made up of many small, casual choices. We choose, things happen; we end up going down one route for good or ill. Sometimes you look back with regret and wish you had chosen differently, but at other times you look back with great thankfulness that, somehow, in the guidance and providence of God, you took a pathway which has been so full of blessing.

In the Book of Deuteronomy God informs the Israelites how they are to behave as they prepare to cross over into the Promised Land. *"I am setting before you today life and death, blessings and curses: choose life!"* Listen to the verbs: *"If you Obey these commandments, Love the Lord your God, Walk in his ways, Observe his commandments, you shall live, and the Lord will bless you."* Obey, love, walk, observe - this is about fidelity. It is a bit like the marriage vows *"to love, honour and keep, in sickness and in health, forsaking all other..."* To be true to God, and no longer to be alone. This is the pathway that brings life and health and blessing. But the other path is about infidelity *"if your heart turns away, and you do not hear, and you are led astray to follow other gods..."* this path will lead you to destruction.

When we think of the year that lies ahead of us and how we would like to be in that year, this is the choice that matters, the choice of fidelity. For Christians this sense of guidance, of walking with God, is important, because we intend that whichever way we take, God is with us. That's how we develop who we are and how we are. We are the people we are through the choices we make. And a fundamental part of being a Christian is about walking with God - whatever the path, left or right - and sometimes it doesn't matter. So that whichever way we are travelling, God is beside us, above, around, within us; God is present, and helping us to find in that particular pathway opportunities for life in all its fullness and to receive God's blessing.

New Year blessings, Revd Linda

For when you're looking for something different...

RELAX, DINE AND UNWIND IN AN AREA



THE
WHEATSHEAF
AT
BEETHAM

OF OUTSTANDING NATURAL BEAUTY

Inn · Food · Accommodation · Gift Shop
We cater for all. Your cosy escape in the country

Telephone: 015395 62123

MONDAY to FRIDAY
LUNCHTIME SPECIAL
2 COURSES FOR £7.95

Beetham, nr Milnthorpe, Cumbria, LA7 7AL

Email: info@wheatsheafbeetham.com

www.wheatsheafbeetham.com

LAKE LAND
FIREPLACES
Est 1993

Bespoke stone
fireplaces

Cast iron radiators

Full installation
service

Period property
specialists



146 Highgate, Kendal, Cumbria LA9 4HW

Tel: 01539 731010



STORTH MOTHER & TODDLER GROUP

Heron Hall, Storth

Tuesdays and Thursdays, 10am - 12noon

All welcome

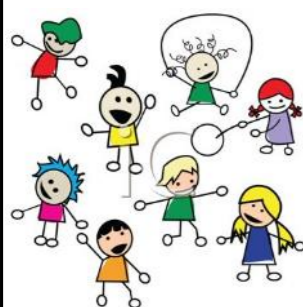
Enquiries to Tina on 015395 - 62281

Beetham CE School Toddler Group

Every Friday at 1.30pm in the school

Play, Dance and Fun!

All Babies & Toddlers Welcome



C.E.S.

Electrical Services

Installation ~ Inspection ~ Testing

015395 63303
07903 161602

Friendly reliable service

C. M. SIGNS

Your local time-served sign-writing specialists

015395 - 63000

Graham Pooley WINDOW CLEANER

1 Castle Riggs, Kendal
01539 - 721981

LUNESDALE HOUSE

RESIDENTIAL
RETIREMENT HOME

Hale, nr Milnthorpe

015395 - 63293

Registered with The National Care Standards Commission

FRIENDS OF BEETHAM CHURCH

Beetham Church Heritage Trust is registered with the donation website at

easyfundraising.org.uk/causes/bcht

Help support the Trust by using this website for your on-line shopping - it will cost you nothing

Please pick up a leaflet in church



Details of the Friends and how to become a member can be found at beethamstmichaelandallangels.co.uk/Heritage_Trust

CREATIVE SEAFOODS

Lovely fresh and smoked fish & shellfish delivered to your door weekly.

Ethically sound & nicely packaged. Ready for eating now or freezing.

for details, contact
NATHAN LUSTED
0750196 7000

info@creativeseafoods.co.uk

BED AND BREAKFAST Barn Close, Beetham

Peaceful setting on edge of village
www.nwbirds.co.uk/bed-and-breakfast.htm

Anne Robinson 015395 63191

Irene Taylor Hearing Centres

Salt Pie Lane
Kirkby Lonsdale

015242 73589

Specialist in hearing aids & hearing protection

www.prestonhearingcentre.co.uk

Est. 1980

LUMBERJAX FIREWOOD

SUPPLIERS OF SEASONED HARD & SOFTWOOD LOGS

Mobile: 07725 473850

THE PARISH OF ST. MICHAEL AND ALL ANGELS, BEETHAM

Priest-in Charge
Churchwarden
PCC Secretary
PCC Treasurer
Verger
Church Flowers
Captain of the Bell Tower
Church Electoral Roll
Beetham C of E School

Rev Linda Lonsdale
Jenny Marks
Dorothy MacLeod
Graham Smith
Val Holden
Dianne Lomax
Jenny Marks
John Dugdale
Wendy Nicholas

015395 62412
015395 62559
015395 62062
01524 782319
015395 63639
015395 62648
015395 62559
01524 781570
015395 62515

rev@jandll.plus.com
jenny.marks@btinternet.com
admhm@live.co.uk
graham.hollowrayne@gmail.com
cli.val@zen.co.uk
diannelomax@btinternet.com
jenny.marks@btinternet.com
johndugdale10@btinternet.com
head@beetham.cumbria.sch.uk

"The Gateway" ~ Editor
~ Business Manager

Jenny Marks
John Lomax

015395 62559
015395 62648

beethamnews@aol.com
gatewayads@btinternet.com

Church Services at Beetham in January

Date	Time	Service
Sun 1st Jan	10am	Parish Eucharist
Circumcision of Jesus	4pm	No Evensong
Wed 4th Jan	9.30am	Holy Communion
Fri 6th Jan	9.15am	Epiphany School Assembly
Sun 8th Jan	10am	Parish Eucharist
Epiphany	4pm	Evensong
Wed, 11th Jan	9.30am	Holy Communion
Fri 13th Jan	9am	School Assembly
Sun 15th Jan	10am	Parish Eucharist
2nd of Epiphany	4pm	Evensong
Wed 18th Jan	9.30am	Holy Communion
Fri 20th Jan	9am	School Assembly
Sat 21st Jan	1pm	Wedding
Sun 22nd Jan	10am	Parish Eucharist
3rd of Epiphany	4pm	Evensong
Wed 25th Jan	9.30am	Holy Communion
Fri 27th Jan	9am	School Assembly
Sun 29th Jan	10am	Parish Eucharist
Candlemas	4pm	Poetry & Readings

Please check Church noticeboards or beethamstmichaelandallangels.co.uk for any changes

Get Well Soon & Thank You

Over the Christmas period Revd Linda has been unwell and unable to lead the Christmas services. We all wish her a speedy recovery and a welcome return to church for both Linda and Geoffrey later this month

In the meantime we would like to offer our sincere thanks to Revd Canon David Peacock. As reported in last month's Gateway, David has recently moved into Beetham and had been granted permission by the Diocese to officiate at the occasional service here. However, we had not expected to call upon his services quite so soon and so comprehensively! We are delighted and very grateful that he so willingly led our Festival of Nine Lessons & Carols, Christingle, Midnight Mass, and Christmas Day worship, and is continuing to be the celebrant at our regular services until Linda returns to full health. Thank you and best wishes to both David and Judith for a peaceful New Year

Evensong services in January

Please note that there are two changes to Evensong services in January:-

Sunday 1st January
There will be no Evensong on New Year's Day

4pm Sunday 29th January
A special service of poetry and readings will be held to celebrate Candlemas

All are welcome to attend



Flowers for all occasions

Woodlands Nurseries

Crooklands
01539 567273

IAN COPELAND

Qualified Electrician
For all your electrical installation work. FREE ESTIMATES NO VAT
Tel 015395 64644
Mobile 07798 552028

MARTIN

PAINTER & DECORATOR
07881 895909
01524 61834
martin.painting.decorating@gmail.com

IAN BRADSHAW

INTERIOR & EXTERIOR PAINTER & DECORATOR
015395 62089
07968 390396

Gas & Oil Boiler,
Gas Fire Repairs & Maintenance

015395 - 63562
MARK N. SHAW

ANDREW COWPERTHWAIT
PAINTER DECORATOR
PLUMBER & TILER
01524 - 762443

TONY GIBSON

SPECIALIST IN:

- STONEMASONRY -
- PLASTERING -
- ALL ASPECTS OF BUILDING -

015395 64702
07815 888 564

www.tgibsonbuilderscumbria.co.uk

NEIL TAYLOR

PAINTER & DECORATOR
015395 - 64411
07778 - 467521

NBC-SKYNET DIGITAL TV AERIAL AND SATELLITE

07710 400 499

LOCAL - PROFESSIONAL - RELIABLE

SUPPORT OUR
LOCAL ADVERTISERS

To book space call John on
015395 62648

or email gatewayads@btinternet.com

Visit our website at beethamstmichaelandallangels.co.uk

L. M. Baverstock

Ophthalmic Opticians
The Square, Milnthorpe
015395 - 62633

T.T. CARPETS

RED BARN
HARMONY HILL
MILNTHORPE
015395 - 62898

CHAMPION CARPET & UPHOLSTERY CLEANING

Carpets, upholstery & rugs cleaned & revived to a high standard
For homes, businesses, caravans/cars or holiday accommodation
Great prices and free estimates
call 015395 62390 or 07977 021002
www.championcarpetcleaning.co.uk

Lakeland & Lunesdale
Physiotherapy & Sports Injury Clinic
Milnthorpe
015395 64727

clinic@physio-sportsinjuries.co.uk
www.physio-sportsinjuries.co.uk

Chaplows Heating Services
Boiler Services
GAS OIL LPG
015395 - 63017
07831 - 223140

Sunday Breakfast with Richard Corrie

BBC RADIO
CUMBRIA

6.00am to 9.00am
95.6, 96.1 & 104.1FM
bbc.co.uk/cumbria

Reflecting faith across the County



2018 sees churches, chapels and corps joining in the countywide Moving Mountains Mission when the Diocese will be supported by teams led by Senior Church Leaders from all four Partner Denominations

"Excited, encouraged, uncertain, challenged, hopeful!"

Already people have been responding in different ways to the idea of the Mission. It is an opportunity for every church throughout Cumbria to build on what they are already doing in helping others discover more of God and his purpose in their lives. The starting point for exploring what can be done is a series of Launch evenings taking place in early February. Anyone can attend and details of the different venues are available on the Moving Mountains page of the God for All website (www.godforall.org.uk/moving-mountains-launch-events/) or at the back of the church

Candlemas



Candlemas will be celebrated this year on 29th January, the nearest Sunday to Candlemas Day, 2nd February. It was the custom to take a baby boy to the Temple in Jerusalem to be presented to God forty days after his birth, and Candlemas celebrates the ritual purification of Mary and the presentation of Jesus Christ in the Temple 40 days after Christmas Day

In pagan times the day was celebrated as the midpoint of winter - halfway between the shortest day and the spring equinox - and it was known as the 'Feast of Light' marking the increase in sunlight as winter gave way to spring

The name 'Candle Mass' was given to this day as all the candles that were to be used in the church during the year were brought to be blessed. In early times it was thought that candles gave protection against sickness, famine and evil spirits. In the church the candles serve as a reminder that before Jesus came the world was considered to be in darkness, and that he became a guiding light. Candles are lit during the Candlemas service to represent Jesus Christ as 'the Light of the World'

Folklore suggests that Candlemas Day signals the weather for the rest of the winter, with a fine day predicting that there is more winter to come:-

*If Candlemas Day be fair and bright, Winter will have another fight
If Candlemas Day brings cloud and rain, Winter will not come again*

Friends of Beetham Church

After a successful 2016 raising funds for the church and local and national charities, the Friends invite you to join in the fun of fundraising again this year. Look out for more details in The Gateway and on our website

February 28th ~ Shrove Tuesday Supper & Quiz

March 15th ~ Lent Soup Lunch

April ~ Arnside Ladies Choir

April ~ The Duck Race

May ~ Flower Festival

June ~ Summer Special



easyfundraising.org.uk/causes/bcht
feel good shopping

We need you to...

- 1. Join**
Head to easyfundraising, search for us to start raising.
- 2. Shop**
There are nearly 3,000 retailers on board, so pick the one you want and start shopping.
- 3. Raise**
After you've made your purchase, the retailer will make a donation to us at no extra cost whatsoever!

We have already 'easyfundraised' nearly £250 for the Beetham Church Heritage Trust, so please help by joining easyfundraising/causes/bcht today ~ it is money for free!

Had enough mince pies?

Try our home-made cakes instead, at Beetham Village Coffee Morning



There is no coffee morning in January but come along on Wednesday 1st February 10.15 to 11.30am in the church

There is no charge and all are welcome!

Church Volunteers Wanted

We still have vacancies for these exciting positions on our regular church rotas. No application form, CV or interview needed...

- ~ Cleaning (last Friday morning every 3 months)
- ~ Flower arranging (once or twice a year, plus festivals)
- ~ Gateway folding (1-2 hours, 2 or 3 times a year)
- ~ Gateway distribution (every month)
- ~ School assembly prayers (Fridays in term-times, c.6 times per year)
- ~ Rose pergola (mainly summer months, individual arches allocated per volunteer)

If you are willing to join a rota please speak to Jenny Marks or sign up at the back of church. Thank you!



December at St Michael & All Angels

On 8th December the church played host to two performances of the School Nativity Play 'Stargazers'. As always Wendy, the teachers, the children (and their costume making parents), and Bill Haddow who constructed the stage, had worked really hard to bring us such a wonderful telling of the Christmas Story, and pictures can be found on the next pages. The following Sunday, celebrations continued with the Golden Wedding Anniversary of Rita and Alan Higham, who invited the congregation to join them for a glass of bubbly and a golden cake, beautifully made by Anne Clarke.

The build-up to Christmas week began with the School Carol Service on their last day of term. Thanks go again to Antony Wood for providing a lovely Christmas tree, and to Harry Parrott, Brian Smalley, and Ian Stirrup and everyone that helped to decorate it. Thanks also go to Dianne Lomax and her team of flower arrangers for the lovely displays around the church and the advent wreath, and to Harry and his team for installing all the candles. The traditional Festival of Nine Lessons & Carols was held on the Sunday before Christmas and thanks go to organist John Falkingham for organising and directing a specially augmented choir in such a moving service. Thank you also to the readers representing different parts of our community, and to the mulled wine and mince pie makers and bellringers after the service. During the week 125 Christingles were made, with grateful thanks to Booths Milnthorpe for providing the oranges. The Christingle service on Christmas Eve was attended by 200 people, with the church beautifully lit by the children forming a circle with their Christingles, the final white advent candle being lit, and the figure of Baby Jesus being placed in the Nativity Crib and blessed

Traditional services of Midnight Mass and the Christmas Day Eucharist completed the Christmas celebrations, and a special thank you goes to Revd Canon David Peacock for officiating throughout this period





Stargazers



Nativity
2016



Beetham WI

Welcome to the New Year!

Beetham WI finished 2016 with a relaxed gathering at Heron Corn Mill, which was accompanied by quizzes and lots of chatter. It was a very fun evening!

The annual presentation of the Whittle shield for "Member of the Year" went to Doreen Clarke and the WI cup for overall competition winner was Norma Peet – congratulations to you both



Our first meeting of the new year is on Tuesday 3rd January, 7pm at The Heron Theatre, when Jim Bispham will talk about The Appalachian Trail in North America. We have a very varied and busy 2017 planned; please see the village notice board for details and do join us at any meeting, as guests are always invited.

Wishing you all a peaceful 2017 ~ Sarah Easton, WI President



Arnside & Silverdale AONB Conference 2017 "Our Local Heritage"

Wednesday 25th January 2017
Arnside Educational Institute

Conserving and recording the heritage of the area is an important part of the AONB Partnership's Management Plan. The conference this year is about the historic development of the area over time, recent work to record the heritage features that make our area so distinctive, and to conserve these features for years to come. We look forward to a fascinating day!

Conference places are free but **must** be booked in advance. Register for your place by 13 January by emailing:

info@arnsidesilverdaleaonb.org.uk

Dallam School presents
Les Misérables School Edition.
Performed entirely by students
A musical by ALAIN BOUBLIL and CLAUDE-MICHEL SCHÖNBERG

7-10 February 2017
Dallam School
Milnthorpe
LA7 7DD

Open 6.50pm for 7pm
Tickets from the Hub
or call 015395 65161
£8 adults £6 students

Westmorland Orchestra

Mary Wakefield Westmorland Festival Concert

March 18th 7.30pm

Westmorland Hall
Kendal Leisure Centre

Conductor - Richard Howarth
with Gideon Brooks - Trumpet

Schumann
Overture, Scherzo & Finale Overture

Hummel

Trumpet Concerto

Beethoven

Symphony No. 3 in E flat 'Eroica'

To Purchase Tickets go to
www.breweryarts.co.uk/lakes-tickets/

This concert marks the opening of the Mary Wakefield Westmorland Music Festival



Beetham Church Handbell Ringers

The reputation of the Beetham Handbell Ringers has been spreading further afield this year, with eight performances in the lead up to Christmas. With a programme of carols and Christmas music the team played at Allan Bank at Grasmere and Grayrigg Village Hall, as well as Hartland House, Beetham WI, Beetham Nurseries, Beetham Church, Elmsfield House, and Lunesdale House. The audiences were encouraged to join in the singing, and thank you to members of the choir who came along to several of the venues to lend their voices to the carols

The handbell ringers would like to thank everyone for their hospitality - a team of 10 ringers can consume a lot of mulled wine, mince pies and tea!



Carol singing

The traditional carol singing around the village was - for a welcome change - blessed with fine (albeit cold) weather this year. With 14 carollers singing around Slackhead, and a record 19 singers the following evening around Beetham, we were welcomed with offers of drinks, mince pies, sausage rolls, and chocolates at so many houses along the way to keep us all in good voice!

We are delighted to have raised **£426** for this year's charity, **Crisis at Christmas**, and would like to thank everyone who donated so generously over the two evenings



art dance
the HERON theatre
music film

January Programme

Friday 13th January **FILM AT THE HERON** 7.30pm
Love & Friendship (2016) [U] - 92 mins
Based on a Jane Austen novella about a beautiful widow, Lady Susan Vernon (Kate Beckinsale), who has come to the estate of her in-laws to wait out colourful rumours concerning her dalliances circulating through polite society. She decides to secure a husband for herself & her reluctant debutante daughter

Thursday, Friday & Saturday 26th, 27th & 28th January, 7.30pm
The Sunshine Boys English Lakes Touring Company
English Lakes Touring Company in collaboration with *theCompany* presents Neil Simon's classic comedy in which two vaudeville greats – the Morecambe and Wise of their time – try to work together again. But they haven't spoken for twelve years – will it work?

Friday 3rd February **FILM AT THE HERON** 7.30pm
Room (2015) [U] - 118 mins
Celebrating the bond between parent & child. Ma has created a whole universe in 'Room' for 5 year old Jack, where they have both lived for his whole life, then she risks everything, in escaping, to give him the chance to make a thrilling discovery

Select your seats and book on line at www.theherontheatre.com
Box Office open Fridays from 10am until 12noon 015395 64283

Help Arnside & Silverdale AONB go WILD!

Arnside & Silverdale Area of Outstanding Natural Beauty is planning to work with partners across the area to organise a WILD! festival for families and children next year and we need your help! If you can spare three minutes filling in our survey, you'll help us to tailor the exciting activities to meet your kids' needs, and you'll potentially increase the amount of funding we can secure.

Every day there is another report about how to be happier, how British children are getting obese, how we don't spend enough time outdoors. And yet there's more homework than ever, less time than ever, more pressure from tests and work... It's enough to make your head hurt.

Arnside & Silverdale AONB want to help parents to get their kids outdoors in a way that works for them. Do you want free activities? Support for schools to get kids outdoors more? Supervised outdoor free play sessions? More information about how to get to the



countryside and what to do when you arrive? We want to make it easy for you to access the beautiful countryside on your doorstep and make the most of time spent outside.

To make sure we plan the most useful activities for you and your children, we need your help, so fill in the survey and give us your thoughts!

www.arnsidesilverdaleaonb.org.uk/help-us-go-wild/

Are you looking for Stimulating Talks? Friendly People? then

QUEST

is for you!

Meetings held on 2nd & 4th Thursdays of the month in The Athenaeum, Leasgill, at 10am

Talk - Coffee - Questions - Visitors Welcome

12 January: 'Only Half a Story'

by Brian Wilson

26 January: 'Letters & Lines from the Lakes'

by Gilly Lewis

Contact John Whitehead 015395 62101

johnwhitehead@quikmail.co.uk

New Multi-Sensory Exercise Class



using the Ronnie Gardiner Method

This fun exercise method uses rhythm, melody and harmony to help improve concentration, memory, coordination and balance. It has potential benefits for everyone, but especially those who have diseases and injuries of the brain and central nervous system such as Parkinson's Disease, Dementia, MS and Stroke patients

Come and try these free classes at The Gateway Centre, Gillinggate, Kendal.

Starts on Friday 20th Jan for 6 consecutive weeks from 2pm - 3.30pm

Limited places are available so please book on 01539 728180

At any time your parish council will usually have a number of projects in train. Some of these may be abandoned in the course of discussion and some will continue to fruition, but one thing they almost all have in common is that they up take a lot of time between start and finish. If other councils are involved, the amount of time soon increases.

Projects currently in the pipeline include refurbishing the ancient finger post at Slackhead. Many groups of enthusiastic people are involved with this project, which further adds to the time frame, but it is moving forward, albeit slowly, and at least it looks as if there will ultimately be a good result. One project that has been abandoned is the stone seat outside the Heron Theatre – on balance it was decided that, although restoration was a nice idea, a lot of manual work was involved and there was, in fact, little demand for a seat at that location. The seat will now remain as an attractive base for Beetham WI's attractive planter. Other projects rumble on (for example the Dixies site at Sandside) with a conclusion apparently no nearer despite the Parish Council's best efforts.

The litter-pick referred to in earlier newsletters was deferred after an unidentified litter-picker was spotted hard at work along the A6 between Beetham and Hale. No doubt that particular stretch of road will need further attention before long and it is planned to re-assess the situation in spring 2017. However, along that same stretch of road, the new crematorium is beginning to take shape and will soon become an established feature. It will be interesting to see just how well the finished building will merge into its surroundings.

The Beetham defibrillator project is presently on hold. BT had given permission for a defibrillator to be housed in the Stanley Street pay-phone box, as the box was not being used very much for its original and intended purpose. Then BT announced that all underused phone boxes – including the Stanley Street box – were being considered for removal, subject to consultation with local authorities. This is where we are at this moment. But there is hope for a favourable outcome. It is understood that it may become possible for a local authority to 'adopt' a threatened phone box. Watch this space.

You may have seen village maps/information panels on display in other villages. Indeed, Beetham parish already has two such boards, on Hale Green and at the Friar Cote Bridge end of Sandside Cutting. There is now a growing popularity for these boards and your parish council plans to site four more at appropriate points around the parish. These should appear for summer 2017.

Two police matters should be mentioned. Although Beetham parish is, thankfully, relatively crime-free, it is very close to the border between Cumbria and Lancashire. The A6, which passes through it, carries much of the traffic engaged in cross-border crime. Cumbria Police target this area in the hope of intercepting such traffic, but their appeal for active support from civilian volunteers has gone largely unanswered. Can you help? Additionally, Cumbria's Police & Crime Commissioner has agreed to meet representatives of the three local parish councils (Arnside, Beetham and Milnthorpe) to discuss general policing matters, including any concerns people may have. Beetham Parish Council will certainly be nominating representatives for this meeting.

Clerk: Mr J R Scargill 01524 782811
Chair: Mr B C Meakin 015395 65722

Beetham Parish Council
The next meeting will be on
Monday 9th January at 7pm
in **Storth Village Church**

Members of the public are welcome to attend

Minutes of the December meeting and details of the current East and West Ward Councillors can be found on the website at www.beethampc.co.uk



ARNSIDE ST JAMES
8.00am: BCP Holy Communion
10.30am: Morning Worship, usually with Communion.
2nd Sunday: All-age Worship
6.30pm: 1st Sunday various styles of worship
Info: arnsidechurch.webplus.net Revd David Cooper 01524 761319

BEETHAM ST MICHAEL AND ALL ANGELS
10.00am: Parish Communion
4.00pm: Sung Evensong
Info: beethamstmichaelandallangels.co.uk
Revd Linda Lonsdale 015395 62412

HEVERSHAM ST PETER
8.00am: BCP Holy Communion
2nd, 4th and 5th Sundays
9.30am: Main Service:
1st and 3rd Sundays: Parish Communion (CW)
2nd Sunday: Communion Praise (contemporary worship)
4th Sunday: All Age Worship
4.00pm - 5.00pm: Messy Church for Families on 3rd Sunday
6.30pm: Evening Prayer with hymns on the 4th Sunday
Info: stpetersheversham.org

LEVENS ST JOHN
10.00am: Parish Communion: 2nd Sunday All-age worship
Info: levens.org.uk Revd Ruth Crossley 015395 60223

MILNTHORPE ST THOMAS
8.00am: BCP Holy Communion 1st and 3rd Sundays
11.00am: Main Services 1st, 2nd and 4th: CW Communion
3rd Sunday: Morning Praise
11.00am: every week Sunday Circle for children
6.30pm: on the 2nd Sunday: Café Church
Info: stpetersheversham.org

STORTH VILLAGE CHURCH
10.30am: Methodist and Anglican services each week
Info: Revd David Stretton 01524 761397; Revd David Cooper 01524 761319

METHODIST SERVICES
ARNSIDE
10.30am
arnsidemethodistchurch.org.uk
MILNTHORPE
10.30am 3rd Sunday of month
at Methodists in Milnthorpe, M:Hub,
Beetham Road
LEVENS
10.30am levens.org.uk
Info: Revd David Stretton
01524 761397 or 015395 62985

ROMAN CATHOLIC SERVICES
ARNSIDE
OUR LADY OF LOURDES
Saturday, 5.30pm
MILNTHORPE
CHRIST THE KING
Sunday, 9.30am
Info: Mgr Flattery 015395 62387
or Chris Noble 01524 762427

SUPPORT OUR LOCAL ADVERTISERS

To book space call John on 015395 62648
or email gatewayads@btinternet.com
www.beethamstmichaelandallangels.co.uk

WESTMORLAND COURT
ARNSIDE

NURSING & RESIDENTIAL CARE HOME
46 roomed home set in its own quiet grounds.
Providing a high standard of care
within the community
Please ring Jackie or Ann
for information or a friendly chat,
on 01524 - 761291

Crossfield Housing (Arnside) Society Ltd
provides accommodation for people later in life

- Convalescence or short breaks
- Independent living in bungalows
- Sheltered accommodation, with meals and companionship

For more information phone:
Crossfield House on 01524 762165
Ashmeadow House on 01524 761270
or visit www.crossfieldhousing.co.uk

FISHWICKS LIMITED

Established 1935

Fishwicks
Funeral Service

Beetham Hall, Beetham,
Milnthorpe, Cumbria, LA7 7BQ

Tel: 015395 63108
Kirkby Lonsdale: 015242 71400

Independent Family Business
24 Hour Service
Private Chapels of Rest
Pre-paid Funeral Plans

www.fishwicksltd.co.uk

MOSSDALE SERVICE STATION

A6, Hale Moss, tel: 01524 781381
Petrol, Car Wash



Store open 6am-8pm
Wines & Beers, Fresh Produce, Groceries, Snacks
Hot & Cold Drinks, Papers, National Lottery



CHIMNEY SWEEP
Bill Haddow

2 THE MAINS
BEETHAM
LA7 7AS

015395 63768
0794 9955 472



Member of the Institute of Chimney Sweeps

PARKIN and JACKSON
Monumental Masons

New Memorials
Second Inscriptions, Repaints,
Regilds and Renovations

Visit the showroom on
14 APPLEBY ROAD, KENDAL LA9 6ES
Telephone: 01539 722838
Free estimates & brochure on request
www.parkinandjackson.co.uk
email: info@parkinandjackson.co.uk

SOUTH LAKELAND
AGE UK

GENTLE EXERCISE
CLASSES &
REFRESHMENTS

Wednesday 10.30am
Storth Village Hall
Mike Crawford:
015395 60736

Tuesday/Friday 10am
Arnside Methodist
Church Hall
Eileen Walters:
01524 761720

HALE GARAGE CO

(Practical Automobile Engineers)
Established over 78 years

Main A6 Road, Hale
LA7 7BH

New & Used Car Sales Service & Repairs

Full Dealer Computerised Diagnostics Equipment

MOT Testing, Body Repairs, Tyres

Batteries, Exhausts & all your Motoring needs

Free collection or loan car service

015395 - 62173 / 62839

SOUTH LAKELAND AGE UK LUNCH CLUBS (12 for 12.30pm)

Arnside Lunch Club 1st Friday of month at **The Albion**, and
Sandside Lunch Club 3rd Wednesday of month at **The Ship**,
Christine Marland, 01524 761566

Storth Club 2nd Thursday of month at **The Kingfisher**,
Norah Padgett 015395 62887



Helpline: 01539 728180; www.ageuk.org.uk/southlakeland

Huw & Lorraine
welcome you to
Beetham Village Store
& **Tea Room**
Tea Room open
Thursday to
Monday 10-4pm
Tel: 015395 62389



Shop open
Monday 9am-5pm
Tuesday 9-5pm
Thursday 9-5pm
Friday 9-5pm
Saturday 9-5pm
Sunday 10-4pm

February deadline and Full Colour editions of The Gateway

The Gateway Team would like to wish all our readers a happy and prosperous 2017

The deadline for contributions for the next edition is

Wednesday 25th January

Please send contributions to the editor, Jenny Marks, Email: beethamnews@aol.com; Tel: 015395 62559

View current & past editions of *The Gateway* in full colour at www.beethamstmichaelandallangels.co.uk/?Links