

# Parish Coffee Morning

## Tuesday 3rd June in Church

### 10.30am-12pm

From June we will be starting a monthly Parish Coffee Morning on the first Tuesday of the month in church

The first date will be Tuesday 3<sup>rd</sup> June from 10.30am, followed by 1st July and 5th August. Please do join us for refreshments and a chance to chat - all are very welcome, and feel free to bring a friend. There is no charge but any donations will be gratefully received for our Heating Appeal

## Flower Festival ~ 'Caring for our Environment'

A big thank you to everyone who was involved in this year's Flower Festival weekend from 24-26th May. The environmental theme was interpreted in many different ways by the flower arrangers - from sustainable flowers, protecting our forests and water, and encouraging wildlife, to reusing, recycling and climate change.

Special thanks go to the flower arrangers, the refreshment providers, the stewards, and the raffle ticket sellers, as well as to the Beetham Community Band and the Beetham Handbell Ringers for providing live entertainment on the Monday. An amazing £725 was raised for the heating appeal from donations, with a further £140 from the Garden Hamper raffle. A wonderful result from a lovely weekend!



[www.beethamstmichaelandallangels.co.uk](http://www.beethamstmichaelandallangels.co.uk)

## June is bustin' out all over

The opening line of the song from Rogers and Hammerstein's musical, Carousel, joyfully celebrates the arrival of summer. June is a major turning point in the year when the fields, woods and hedgerows that have blossomed throughout the spring season are suddenly in full bloom as nature bursts into a glorious fulfilment of growth and energy with the promise of continuing good weather. People are falling in love, and the song celebrates the promise of new life with all its wonders and delights.

The month takes its name ultimately from the Latin name for the sixth month of the year, Iunius, named after the Roman goddess Juno (in Latin, 'Iuno') - it wasn't until the 17th Century that the modern spelling became widespread. Juno had a complicated 'life' in the classical world, but is generally regarded as the queen of the Roman gods and the wife of Jupiter. She was the champion and protector of women, especially in their role as wives and mothers, so her association with a month of growth and fertility is especially appropriate.

Ironically, June is also the month that sees the tilt of the earth in its orbit start the gradual process that leads inexorably to shorter days and longer nights as the sun appears to migrate southwards after the summer solstice on 21st. We are then on the road back to autumn and, beyond that, winter!

However, there is hopefully plenty to enjoy before that. By the time you read this, our Flower Festival in church will be over for another year. Our theme this year was 'Caring for the Environment', reflecting our commitment to be an 'Eco Church'. World Environment Day on the 5th of the month is a reminder that we all need to be aware of our impact on the world we inhabit and the damage we can inadvertently cause by our thoughtless actions. It is widely reported that wildlife everywhere is under threat from both the effects of climate change and the pollution we cause by our abuse of our surroundings. Insects, including the pollinators without which nothing will be 'bustin' out', are in decline thanks to the overuse of insecticides and pesticides. Birds and small mammals find their natural habitats in short supply because of the destruction of hedges and woodland as demand for food production leads to more intensive exploitation of the land. Climate change, evidenced by increasingly high average and maximum temperatures and changing weather patterns, is having catastrophic effects around the world.

We can all play our part in looking after the environment – it is the only one we've got – by being careful in our use of finite resources and by disposing of unwanted items responsibly. 'Reduce, re-use, recycle' is a currently much used slogan to promote responsible, eco-friendly behaviour. It was the motto of a popular children's TV character; do you remember which one? (Answer at the bottom of page 3).

June also means Derby Day, Trooping the Colour, the start of Wimbledon, Glastonbury, Test matches. Lots to look forward to and enjoy. Let's hope that the extended spell of warm, sunny weather we have enjoyed in recent weeks, together with adequate rainfall, will be repeated as the season changes.

Why?

*Just because it's June, June, June!*

*Brian Smalley*





## Letter from the Curate

June is the time for being in the world in new ways, for throwing off the cold and dark spots of life.

*(from A Monastery Almanac by Joan Chittister)*

Thinking on this lovely line, it seems that the 'cold and dark' has actually been thrown off already as I sit writing this in the 20+ degree heat of the middle of May. (I wonder if it will still be the same mid-June?!) However, it being the time for 'new ways' is especially poignant when we look to the June event of the national 'Great Big Green Week' (7-15th). The GBGW exists to celebrate community action to tackle climate change and protect nature across the UK. It aims to help bring to light what we can each do to help preserve the beautiful world that we've been given to live in and to steward.

The slogan for this year's GBGW is 'Let's swap together for good'. There's a focus on swapping events – whether that be plants, clothes, books or any other items that we might otherwise seek to go out and buy new. Swaps are a great way to reuse and recycle (and to keep the load off the purse strings). It's a way of having something 'new' without contributing to industrial fossil fuel burning.

On the GBGW website (<https://www.greatbiggreenweek.com/>) it says: We can all make small swaps, large swaps and swaps that change the system, to make our communities better.

It's not just the swapping of items - a summer dress or a nice hydrangea - that makes an impact ... we can also swap in and out our habits. Maybe we could replace some of the items on our weekly shopping lists with ones that are more ethically or locally made? Maybe we could change to a 30 degree temperature on our washing cycle? Maybe we could look to swap our energy provider to one that uses renewable energy?

We can all make swaps that not only make our community better, but also make better the impact we're having on our environment – on our wonderful earth.

As part of a fourfold vision that many churches in Cumbria follow, we're called to 'Tread gently' on the earth. A reminder that we have been truly blessed by God, the Creator, with a beautiful place in which to spend our days (and in this county especially, I think, we are incredibly blessed with the creation we see all around us), and we are encouraged to look after it, to tread carefully with our carbon footprint, to be more 'green' about the way we approach our daily lives. So, I'm wondering this month what swaps I can make – what 'new ways' I can introduce to my life - to tread more gently... and I wonder if you might consider doing the same.

The earth is the Lord's, and everything in it, the world, and all who live in it; for he founded it on the seas and established it on the waters. *(Psalm 24:1-2)*

With love & prayer  
Hannah



## St Michael & All Angels Beetham Church Services for June 2025

Date	Time	Service
Weds 4th	10am	BCP* Holy Communion
Sun 8th	10.30am	KEMC Joint Eucharist at St John's Levens
	6pm	BCP Evensong
Sun 15th	11am	Parish Eucharist with Confirmation
	6pm	BCP Evensong
Sun 22nd	11am	Parish Eucharist
	6pm	BCP Evensong
Sun 29th	11am	Parish Eucharist
	6pm	BCP Evensong

*\*Book of Common Prayer*



## Kent Estuary Mission Community Gathering

**10.30am, Sunday 8th June**  
**in St John's Church, Levens**

*Please note there will be no service at Beetham that morning, but Evensong will be held at 6pm as normal*

### Roger Goodlad

It was with great sadness that we learned of the death of Roger Goodlad last month. Roger's infectious sense of humour brightened all our lives, and he will be remembered for his devotion, loyalty and care for others even in his own times of pain

Roger's funeral took place on Friday 23rd May and our thoughts and prayers are with the family at this time



## Pilgrimage to the Shrine of Our Lady of Walsingham

Monday 29th September - Thursday 2nd October 2025

An opportunity to enjoy a residential visit in the company of others from the Diocese, to 'England's Nazareth'.

A place of worship pilgrimage for Christians, where God has been known and encountered, for nearly 1,000 years.

*If you would like to know more, please see the information leaflet available at the back of church.*



## Baptisms

*Sunday 4th May*  
*Elliot Alexander Maudsley*  
*Oakley Albie George Dudek Lusted*

*We welcome them into the Beetham Church family*

## Annual Church Meetings

Thank you to all who attended the Meetings on Tuesday 13th May, and the Annual Reports can be found on our website. We are grateful for those who have agreed to serve for the forthcoming year. Vivien Stirrup and John Lomax were elected as Churchwardens, and we welcome Deborah Lancaster, Andy MacLeod, and John and Patricia Lancaster to join as PCC members

At the first meeting of the PCC, Charles Ellis was elected as PCC Secretary and John Lomax as PCC Treasurer, although a new Treasurer is still urgently sought to shadow and hopefully take on this vital role. Thanks were given to those whose term of office as Churchwardens or PCC members has come to an end, for all their hard work and effort. A vacancy still remains for a third churchwarden if anyone is interested in this role

## REST & RESET

Christian meditation  
A moment to press pause II

*St James Church Arnside*

6:15 - 7:00PM

JUN	SEPT	NOV
TUES 3RD	TUES 2ND	TUES 4TH



Contact [revhannahwallace@gmail.com](mailto:revhannahwallace@gmail.com) 01524 449 035

## REST & RESTORE

A time of prayer for healing & wholeness

*St James Church Arnside*

6:15 - 7:00PM

MAY	JUL	OCT	DEC
TUES 6TH	TUES 1ST	TUES 7TH	TUES 2ND



LAUNCH EVENT FOR THE ARNSIDE BIG GREEN WELLBEING WEEK



**Do you have unwanted clothes at home?**  
**Fancy sprucing up your wardrobe for free?**

**Sat 7th June 2025, 7.30-9pm**  
**Arnside School hall, FREE**  
**Tea & coffee available or BYOB**

**Book in advance to attend**  
[revhannahwallace@gmail.com](mailto:revhannahwallace@gmail.com) / 01524 449035

Donate up to 10 clean, good condition adult clothing items prior to the event by 5th June (drop off at 45 Church Hill) and come along on the night to find yourself some 'new to you' items to take home for free!

IF YOU DON'T HAVE ANY CLOTHES TO DONATE, BUT WANT TO ATTEND - BOOK ANYWAY, BUT FEEL FREE TO MAKE A SMALL FINANCIAL DONATION ON THE NIGHT.

FUNDS WILL GO TO SUSTAINABLE ARNSIDE & WI HALL ROOF FUND



**Answer to the Front Page question:-**

**'Reduce, re-use, recycle'**  
**was the motto of Bob the Builder.**









# School Corner

We have had a busy return to school following the Easter holidays.

We welcomed Mrs Horsman back to our school to deliver water workshops to each class. Within the workshop children learnt about how to conserve water as well as how to ensure the water we use is clean.

Working together with church we held our annual Duck Day. The church held the exciting duck races whilst the school ran stalls to entertain all the family. The day was a great success raising over £1000 for the school. Thank you to everyone who came to support the day and to all of those involved in its organisation.

Class 3 visited the British Thoroughbred Retraining Centre in Halton at the start of the month. The children learnt all about how the race horses are rehabilitated and then rehomed following their race career. The children were able to try on riding equipment and groom the horses as well as muck out the empty stables! This was a fully funded visit provided by the BTRC which was an excellent learning experience for all the children.

Class 2 represented our school at the Dallam Rounders Festival. The children played extremely well and really employed their tactics to be able to secure a couple of wins during the afternoon. Well done to the class for their sportsmanship.

On Thursday 8th May we held an afternoon tea for the children and family to celebrate VE Day. We all reflected on the need for peace around the world and how we can learn from the past. Thank you to everyone who came to help us celebrate.

Year 6 completed their SATs this month. The children completed six tests over the course of the week. They completed them in a mature and thoughtful manner doing their very best. They were then treated to a Ms Christine special breakfast to celebrate their completion!

Class 2 have been learning about Donald Campbell and Coniston this half term. To further enhance their learning, they headed off on one of the school minibuses to visit the Ruskin Museum and learn more about Donald Campbell and his vehicles. They also made a stop off at Grizedale to enhance their learning about sculpture and for a well-deserved ice cream!

Class 2 also headed out again to Silverhelm to learn more about the moths in our area. The children investigated the traps that had been set; identifying the different moths within them. They then drew detailed sketches of the moths and thought about the different ways they could improve the environment for them.

The whole school took part in an outdoor day where children made dens, potions and clay models. As well as this, children were treated to sports from around the world by our visiting coach Mr Holden. He told the children how he had seen sport change the lives of displaced and refugee families in Sudan through opportunity and travel. He then taught the children different sports from around the world including American football, handball and Kabaddi.

As you can see we have had a busy half term. The next half term promises to be just as action packed with learning and fun!

Best wishes, Abi Johnson





## Visiting a variety of venues!



Outside Broad Leys

Towards the end of April – and in glorious sunshine – a group from Beetham WI enjoyed an informative and interesting guided tour, organised by 'Lakeland Arts', of two impressive "Arts & Crafts" country houses overlooking Windermere. Broad Leys, designed by C.F.A Voysey, is now the home of the Windermere Motor Boat Racing Club and Blackwell was designed by Mackay Hugh Baillie Scott. A delicious cream tea at Blackwell was appreciated by everyone!

We took part in something quite different for our regular monthly session which, in May, we held at The Atheneum in Leasgill so we could take part in some Circle Dancing. Helen Brooks gave explanations as she guided us through several traditional dances to music.

For our trip later in the month some of us visited Rheged, near Penrith, mainly to view the 'Great Print 10' exhibition from UK artists showcasing screenprint, etching, lino block and collagraph. Entry is free and runs until the 29th June. We also enjoyed some socialising over refreshments in the café!

We have a Talk planned for our 12th June session in The Wheatsheaf (2-4 pm) entitled 'A Brief History of Lancaster Moor Hospital' and for our 10th July meeting we will be running a practical session of Pebble Painting.

If you are interested in attending one of our monthly meetings, contact our Secretary, Jeanette, for further details at [beethamwi@gmail.com](mailto:beethamwi@gmail.com)



Rheged café

**Heydays**  
Care & Support Services

015395 52548

## LIVE-IN CARE

Enjoy living independently at home for longer

Your personalised alternative to residential care

- Remain at home close to friends, family & your local community
- Peace of mind that your trusted, fully-trained carer is with you day and night
- Full support from our professionally managed team with care plans & regular assessments

Contact our friendly team:  
Call us: 015395 52548 | Email: [info@heydayscare.co.uk](mailto:info@heydayscare.co.uk)  
or visit our website: [heydayscare.co.uk](http://heydayscare.co.uk)

## Beetham Village Facebook

A dedicated facebook group for Beetham village

Search for "Beetham Village Cumbria"

---

Est. 1979

## Kent Estuary Travel

24 Hours. Competitive Rates

Local family private hire company founded in 1979

All drivers, male and female, have level 2 nvq in road vehicle passenger driving and are fully licensed with SLDC.

We pride ourselves in having a friendly and reliable service

For a quote please contact us on 015395 62917 or 07974 108501

## MILL TOUR & DEMONSTRATION

Friday 6th June, 11.30 - 1pm  
**BAKING WITH KATE**

Wednesday 25th June, 11am - 4pm  
**CRAFTING WITH ERIKA**

Monday 9th June, 1 - 4pm  
**CRAFTERNOON**

Tuesday 24th June, 1 - 4pm  
**POWSOWDIE**

Wednesday 18th June, 11am - 2pm  
**FOOD FOR THOUGHT**

Sunday 22nd June, 10am - 2.30pm  
**50 YEARS - Free Entry!**

Saturday 19th July, 11am - 4pm  
**FOODIE FRIDAYS**

Friday 6th June, 1 - 3pm

Heron Corn Mill, Mill Lane, Beetham, LA7 7PQ  
015395 64271 - [info@heronmill.org](mailto:info@heronmill.org) - [www.heronmill.org](http://www.heronmill.org)

## Beetham Parish Council

Next meeting will be in  
**Storth Village Church**  
**Monday 2nd June at 7pm**

Members of the public are welcome to attend  
Previous minutes and details of the Councillors can be found on the website at [www.beethampc.co.uk](http://www.beethampc.co.uk)

## Levens Choir

# 50th

## Anniversary Concert

Tickets £15  
From [www.levenschoir.net](http://www.levenschoir.net)  
or on the door  
Children and Students Free

St Oswald's Church  
Main St Warton LA5 9PG  
7:30pm Sat 5 Jul 2025

Carver Uniting Church,  
Lake Rd Windermere LA23 2BY  
7:30pm Tue 8 Jul 2025

Levens Choir  
Charity Number 1010595

# Save the date!

## BEETHAM & HALE

## VILLAGE SPORTS 2025

### Saturday 26th July

Traditional Village Sports Since 1908

**National Theatre Live**

@The Heron Theatre  
Tuesday 17th June, 2pm  
Tickets £10; Members £8

## A STREETCAR NAMED DESIRE

by TENNESSEE WILLIAMS  
direction BENEDICT ANDREWS  
A Young Vic / Joshua Andrews co-production

Young Vic

art dance music film

## the HERON theatre

### June What's On

Friday 6th June ~ The Road Dance (Film)

Friday 13th June ~ Swicheroo (Drama)

Tuesday 17th June ~ A Streetcar Named Desire (National Theatre Live)

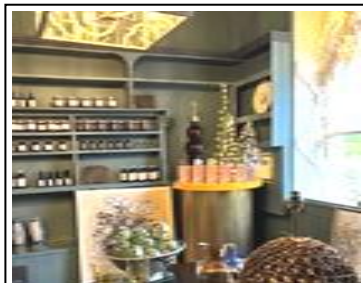
Saturday 21st June ~ A Celebration of Simon & Garfunkel (Saturday Music)

Friday 4th July ~ The Outrun (Film)

Book tickets online [www.theherontheatre.com](http://www.theherontheatre.com)  
email: [boxoffice@theherontheatre.com](mailto:boxoffice@theherontheatre.com) ~ tel: 015395 64283  
Evening performances start at 7.30pm.  
National Theatre Live 2pm. Refreshments available  
The Heron Theatre, Stanley Street, Beetham, LA7 7AS



The Gateway deadline  
**Items for the Summer edition should be submitted by**  
**Monday 23rd June**  
 Please email articles to [jenny.marks@btinternet.com](mailto:jenny.marks@btinternet.com)  
 View deadlines online at [beethamstmichaelandallangels.co.uk](http://beethamstmichaelandallangels.co.uk)  
 Would you like to advertise with us?  
 Annual costs can be as low as just £33! To book space call John Lomax on 015395 62648 or email [j.d.lomax@btinternet.com](mailto:j.d.lomax@btinternet.com)



*Edith Anne*  
 Leslie welcomes you to her interiors shop and cafe in the Old Beetham Post Office  
*Cafe open Saturdays, Sundays and Bank Holiday Mondays 10am—4pm*  
 See noticeboard for shop opening times

**HOUGHTONS**   
**HOME IMPROVEMENT CENTRE**  
 Park Road, Milnthorpe  
 T: 015395 63904  
 Open 7 days  
 Trade & Retail  
 Large stock areas covering  
 Commercial & DIY Power Tools  
 Hardware  
 Electrical & Household Goods  
 Gardening Tools & Equipment  
 Timber, Plumbing, Glass, Key Cutting  
 Paints, Wallpapers & Decorating sundries  
 Paint Mixing Service  
 Gifts & Cards for all occasions

**WOODSIDE WALKS**  
*Dog Walking & Day Care Service*  
 Fully Insured  
 GPS Collars  
 10 Yrs Experience  
 Countryside Walks  
**Contact Theo on 07880 237033 to discuss your requirements**

**PARKIN and JACKSON**  
**Monumental Masons**  
 New Memorials  
 Second Inscriptions, Repaints,  
 Regilds and Renovations  
  
 Visit the showroom on  
**14 APPLEBY ROAD, KENDAL LA9 6ES**  
**Telephone: 01539 722838**  
 Free estimates & brochure on request  
[www.parkinandjackson.co.uk](http://www.parkinandjackson.co.uk)  
 email: [info@parkinandjackson.co.uk](mailto:info@parkinandjackson.co.uk)

 **Carnforth Chiropody**  
*"Helping you and your feet go a long way"*  
**Comprehensive professional, friendly and effective chiropody & podiatry services. Expert help in our welcoming treatment room, conveniently situated in Carnforth**  
**Routine footcare & hygiene issues • Long term health conditions**  
**Resolving pain and posture problems • Nail surgery**  
 Web: [www.carnforthchiropodist.co.uk](http://www.carnforthchiropodist.co.uk)  
 Telephone: 01524 730179 Mobile: 07725 300290  
 Address: 28 Langdale Road, Carnforth, Lancashire LA5 9AU

*Sustainable Gardening Services*  
 SOUTH LAKES  
  
 WOODSIDE GARDENER  
 Sustainable Gardening  
 RHS QUALIFIED  
[WWW.WOODSIDEGARDENER.COM](http://WWW.WOODSIDEGARDENER.COM)  
[INFO@WOODSIDEGARDENER.COM](mailto:INFO@WOODSIDEGARDENER.COM)  
 07533623208 / 07557343508

**FISHWICKS FUNERAL SERVICE**  
 Established 1935  
 Beetham Hall Beetham  
**015395 63108**  
 Independent Family Business  
 24hr service  
[www.fishwicksfunerals.co.uk](http://www.fishwicksfunerals.co.uk)  
  
**BEETHAM HALL CREMATORIUM**  
 Established 2017  
**015395 65363**  
[www.beethamhall.co.uk](http://www.beethamhall.co.uk)

**MOSSDALE SERVICE STATION**  
 **TEXACO**  
 A6, Hale Moss  
 tel: 01524 781381  
 Petrol, Car Wash  
**Nisa Store open 6am (Sunday 7am) - 8pm**  
 Wines & Beers, Fresh Produce,  
 Groceries, Hot & Cold Drinks,  
 National Lottery 

Join The Friends of Beetham Church by picking up a form in church or downloading from our website, and supporting our fundraising to maintain this historic church

 **PLUGGED IN ELECTRICIANS**  
 Customers first - Transparent pricing  
 Clear communication  
**01524 932 524**  
[pluggedinelectricians.co.uk](http://pluggedinelectricians.co.uk)

**MARK ECCLES**  
 ME Electrical Contractors  
 All aspects of electrical work undertaken  
**07866 510 079**

**NEIL TAYLOR**  
 Painter, Decorator & Paperhanger  
 Tel: 015395 - 64411  
 Mobile: 07778 - 467521

**Robb Home improvements and Landscaping**  
 Specialising in fencing, stone walling, paving, garden rooms, lawns and water features  
 Bespoke garden design and build  
 Free estimates  
 Call 07954336176 or 07871878101

Collectable and contemporary  
**BOOKS BOUGHT**  
**015395 35125**  
 Single items or whole collections  
 Will travel to view (from Allithwaite)  
 P.B.F.A. member

**FOOTCARE AT HOME**  
**Tracey Garrett BSc MinstChp**  
 Nail trimming ~ Ingrown nails  
 Corns ~ Callus ~ Diabetic foot  
 Care and advice  
**For Home Visit tel 07766 167018**

**HIGHGATE VETERINARY CLINIC** **01539 721344**  
 Friendly, caring & professional team  
[www.highgatevets.com](http://www.highgatevets.com)  
 173 Highgate and Beeson Rd, Kendal

**Graham Pooley WINDOW CLEANER**  
 1 Castle Riggs, Kendal  
**01539 - 721981**

**IAN BRADSHAW**  
 INTERIOR & EXTERIOR PAINTER & DECORATOR  
**015395 62089**  
**07968 390396**

**MARTIN**  
**PAINTER & DECORATOR**  
**07881 895909**  
**01524 61834**  
[martin.painting.decorating@gmail.com](mailto:martin.painting.decorating@gmail.com)

Gas & Oil Boiler,  
 Gas Fire Repairs & Maintenance  
 **015395 - 63562**  
**MARK N. SHAW**

**Chaplows Heating Services**  
 Boiler Services  
**GAS OIL LPG**  
**015395 - 63017**  
**07831 - 223140**

 **SOUTH LAKELAND AGE UK**  
 For lunch club and exercise class details go to  
[www.ageuk.org.uk/southlakeland/activities-and-events](http://www.ageuk.org.uk/southlakeland/activities-and-events)  
 Helpline : 030 300 30003

  
**The Wheatsheaf**  
 BEETHAM  
 FOUNDED 1809  
[www.wheatsheafbeetham.com](http://www.wheatsheafbeetham.com)  
[stay@wheatsheafbeetham.com](mailto:stay@wheatsheafbeetham.com)  
**015395 64652**

Flowers for all occasions  
**Woodlands Nurseries**  
 Crooklands  
**01539 567273**

**TONY GIBSON**  
 SPECIALIST IN:  
 - STONEMASONRY -  
 - PLASTERING -  
 - ALL ASPECTS OF BUILDING -  
**015395 64702**  
**07815 888 564**  
[www.tgibsonbuilderscumbria.co.uk](http://www.tgibsonbuilderscumbria.co.uk)

  
**HAIRSTOP**  
 2b Mainstreet, Milnthorpe, LA77PN  
**HAIR SALON**  
**015395 63586**  
[www.hairstopmilnthorpe.co.uk](http://www.hairstopmilnthorpe.co.uk)

**L. M. Baverstock**  
**Ophthalmic Opticians**  
 The Square, Milnthorpe  
**015395 - 62633**

**Irene Taylor Hearing**  
 - Specialist hearing aid advice  
 - Earwax removal by microsuction  
 - iPhone compatible hearing aids  
 - Invisible hearing aids  
 - Hearing protection for shooting, motorcyclists & musicians  
 - TV & telephone accessories  
 - Home visits  
 Salt Pie Lane, Kirkby Lonsdale, LA6 2BH  
**015242 73589**  
 Est. 1980 ~ Registered with hcpc  
[www.irenetaylorhearing.co.uk](http://www.irenetaylorhearing.co.uk)

## CONTACTS FOR THE PARISH OF ST. MICHAEL AND ALL ANGELS, BEETHAM

Priest-in-Charge	The Revd Andrew Norman	015395 62355	<a href="mailto:revdabn@gmail.com">revdabn@gmail.com</a>
Assistant Curate	The Revd Hannah Wallace	01524 449035	<a href="mailto:revhannahwallace@gmail.com">revhannahwallace@gmail.com</a>
Lay Minister	Chris Roberts	015395 63019	<a href="mailto:lainyandchris@aol.com">lainyandchris@aol.com</a>
Lay Minister/Churchwarden	Vivien Stirrup	015395 64320	<a href="mailto:vstirrup7@aol.com">vstirrup7@aol.com</a>
Churchwarden	Theresa Holden	01524 782737	<a href="mailto:mtholden77@gmail.com">mtholden77@gmail.com</a>
Churchwarden	Deborah Lancaster	-	<a href="mailto:lancasterdeborah82@gmail.com">lancasterdeborah82@gmail.com</a>
PCC Treasurer	John Lomax	015395 62648	<a href="mailto:j.d.lomax@btinternet.com">j.d.lomax@btinternet.com</a>
Safeguarding Officer	Andrew Skinner	07362 593076	<a href="mailto:beetham-safeguarding@gmail.com">beetham-safeguarding@gmail.com</a>
Gateway Editor	Jenny Marks	015395 62559	<a href="mailto:jenny.marks@btinternet.com">jenny.marks@btinternet.com</a>
Beetham CE School	Abi Johnson	015395 62515	<a href="mailto:head@beetham.cumbria.sch.uk">head@beetham.cumbria.sch.uk</a>

Please do be in touch with Andrew you would like to receive the parish email, if there is any support or encouragement he can offer, if you would have any questions about services church life or the Christian faith, or if you would like anyone or anything remembered in prayer.

## Church Websites

For information about our church and parish, What's On, and church videos please visit our website at [www.beethamstmichaelandallangels.co.uk](http://www.beethamstmichaelandallangels.co.uk). Full colour versions of this and past editions of The Gateway are also available online. If you would like to receive an email copy please contact [jenny.marks@btinternet.com](mailto:jenny.marks@btinternet.com)

For more details of the Kent Estuary Mission Community visit the website at [www.kentestuarymissioncommunity.com](http://www.kentestuarymissioncommunity.com)